



PRODUCT CATALOGUE

WELCOME

In 2005, Phillip Kleinhans made waves by starting a fire; a fire named Namibian Hardwood. Today we are the country's premier supplier of quality Namibian Hardwood, and this fire has been burning ever since.

As one of the biggest wholesale suppliers of wood in Southern Africa, Namibian Hardwood Pty Ltd. boasts approximately 500-strong workforce, with 27 permanent staff in both Namibia and South Africa. Our main distributing hub is situated in Cape Town, and is overseen by Phillip, and assisted by a great team of managers.

Stringent quality control is what sets us apart from the competition. We go to great lengths to ensure that we pack and ship the best possible product. Why? Because our clients demand and deserve quality.

Namibian Hardwood Pty Ltd. has expanded over the years to include more than just bulk wood. In fact the company fabricates and handles more than 300 different products, such as Charcoal, fire-starters, game meat, biltong, braai accessories and African décor arts and crafts.

Namibian Hardwood Pty Ltd. is a dedicated Wholesale Company that provide and supply products Retail and use-end products.

Thank you for choosing Namibian Hardwood Pty Ltd.



Namibian Hardwood

PTY LTD.

12 Oostenberg Street
Durbanville Industrial Park
+27+21+9792051 ph
+27+21+9792051 fax
www.namibianhardwood.co.za



NAMIBIAN HARDWOOD

BARBEQUE | AFRICAN DECOR | FIREPLACE
PTY LTD





BRAAI WOODS



**WOOD THAT WON'T
FIZZLE OUT**

Imagine wood with 6-10% moisture, a bushveld smell, no smoke, no mess and minimal bark. That's the perfect braai wood Namibian Hardwood Pty Ltd. supplies to clients.

More popular than local Rooikrans, Port Jackson and Blue Gum, more and more people are buying from Namibian Hardwood Pty Ltd.

All our woods are long-lasting woods which mean they burn hotter and longer, giving off beautiful big flames that not only cook your food and make for a great braai, but create that wonderful atmosphere of being under an open African sky.

Due to the heat intensity, heaviness and duration of the burning process, as well as the time the coals last (up to 14 hours), you won't need to use as much wood as before.

WOODS THAT LAST LONGER



For indoor fireplaces, our woods are perfect for warming up your home on those cold winter days and nights. Hot coals keeping your home warm, long after the fire has died out. No more ice cold 'rude' awakenings in winter. All woods sold at Namibian Hardwood Pty Ltd. are monitored by the Ministry of Forestry in Namibia.



KAMEELDORING

Kameeldoring is a hardwood and due to its density is considered an Iron Wood. Iron Wood has a density of 936 p-m3 and more, and as these woods are protected species, they are illegal to harvest and transport whilst alive. (The woods sold at Namibian Hardwood Pty Ltd. are legal and their density is within the lawful requirements.) Kameeldoring has a red/orange flame and is tamer than its wild counterpart Sekelbos.

Once you've got this fire kindled and on the go, expect to spend the rest of your evening being 'transported' to the bushveld, as the wonderful wild smell of this wood drifts across the air. Kameeldoring is wonderful for those evenings where you want to socialise and catch up with friends and family. It burns longer than Sekelbos and since the coals last longer, there's time to eat and enjoy the company of loved ones.

MUPANE

The Mupane tree can live between 800 to 2500 years before it dies and falls over. They are an extremely hardwood and even termites avoid eating them. The reason they may die earlier is due to natural causes such as lightning or drought. Mupane trees love growing between rocks and on mountains. They are considered a weed and a problem in Namibia. The problem in Namibia is so great, that approximately 35 000 tons of alien wood is exported out of Namibia every month, and nearly 80% of this wood is used to make Charcoal. It is the longest burning wood that we sell, and is the most popular wood for the fireplace. It has a small blue/ purple flame and the coals retain their heat long after the fire is dead



SEKELBOS



Sekelbos is an alien pest in Namibia. Rainfall determines how thick the tree will be. We import it because the quality is so much better than the local Spicebush. Sekelbos burns hot with big high red/orange vibrant flames. It is a clean burning wood with a very distinctive smell when burning, and is fantastic for naturally adding flavour to your meat while it cooks. For this very reason, a number of clients buy the bark of the Sekelbos. The coals burn long and outlast Rooikrans for 3-4 hours while still maintaining their heat. Sekelbos with all its flavour, passionate and colourful flames is by far the best selling wood.





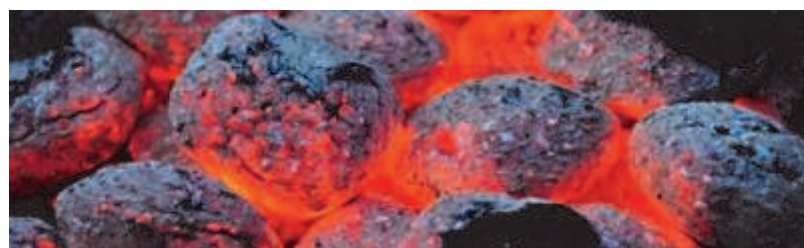
BRAAI EXTRAS



CHARCOAL



The Charcoal sold by Namibian Hardwood Pty Ltd. is made from the invader/alien species such as various Acacia and other hardwoods. Mupane, however, is the best wood to use to make Charcoal, as it burns the longest, and it also makes the heaviest coal. It is not suitable for indoor fireplaces, especially fireplaces without covers, as the coal makes small shooting pieces and when hot, will 'jump' and land on carpets. Charcoal is only sold in 5kg and 10kg bags. The 10kg bags are sold to the restaurant trade and the 5kg sold for domestic braais. The 5kg bags are sifted at 20-50mm, and the 10kg are sifted from 50mm and higher, meaning all our bags will contain maximum sized Charcoal pieces of 180mm pieces. Please bear in mind that due to transportation, Charcoal may break into smaller pieces.



BRIQUETTES

Namibian Hardwood Pty Ltd. Briquettes are made of Charcoal fines less than 20mm, which is then compressed into a round ball. Briquettes are mainly used for cooking in a Weber.

The process of making Briquettes is quite intensive, and as a result they are generally more expensive than wood. However, as they are compact, they are able to be packaged better and Briquette pieces fit easily into any space.



KINDLING/POTJIE DORINGWOOD

The Kindling/Firestarter wood sold by Namibian Hardwood Pty Ltd. is a combination of all our braai woods, chopped into finer pieces. Kindling/Firestarter wood is perfect for starting your braai and many people use them for their indoor fireplaces.



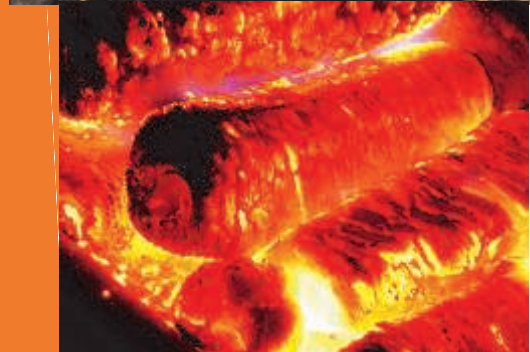
FIRELIGHTERS

Firelighters are made from paraffin and chopped Apricot kernels. Firelighters are small solid tablets and were designed to replace Kindling/Firestarter in starting a fire. Firelighters are typically used to start wood or coal fires.



ECO LOGS

Eco Logs are an all wood product that is simply clean, dry sawdust and shavings that have been mechanically compressed to form a solid log. They offer many benefits over natural firewood because they are a manufactured product, i.e. they are subject to stringent quality controls during production. They can be safely used as a concentrated fuel source in all open fireplaces, wood burning heaters, combustion stoves and industrial boilers. As there are no chemicals, additives or binders used to hold the logs together, they can also be used as BBQ fuel.



PREMIUM WOOD PELLETS

Premium Wood Pellets are compressed wood. The idea that wood makes a great fuel source is ancient, but pellet manufacturers are transforming the process to make wood burn more cleanly and efficiently. Much of the pellet material comes from waste sawdust, shavings, and chips remaining after lumber production; this waste is then compacted into small, dense pellets, which burn more efficiently than other forms of wood. Their size and weight makes them easier to transport and store than traditional wood logs. It is a clean burning source of fuel, which contains no bark. It is suitable for automated feeding combustion stoves as well as industrial boilers. It is 6mm in size.



ANTHRACITE

Anthracite is a hard, compact variety of coal that has a submetallic lustre. It has the highest carbon content, the fewest impurities, and the highest calorific content of all types of coal except for graphite. Anthracite is the highest rank of coal. It has a carbon content of over 87% on a dry ash-free basis. Anthracite coal generally has the highest heating value per ton on a mineral matter free basis. It is used mostly for manufacturing processes such as plastics, roofing, linoleum, synthetic rubber, insecticides, paint products, medicines, solvents and synthetic fibres. Please note this fuel is not a braai fuel. It is very popular for enclosed fireplaces.





BRAAI ACCESSORIES



Braai Knife (wooden Handle (S/S))



Tongs (Stompie—Chrome)



Fireplace Log Stand (M/S)



Tongs (Extra long—Aluminium)



Tongs (Salad) (S/S)



Grid Brush (Wooden Handle)



Coal Scoop (M/S)



Turbo Gas Lighter



Silicone Basting Brush Set (3 Piece)



Tongs (Long—Aluminium)



Gas Boiling Table (Double) (C/I)



Lid Lifter (Chrome)





Tongs (Medium) (S/S)



Braai Rake (M/S)



Basting Brush



Wire Grid Brush



Braai Fan



Sandwich Maker



Jaffle Maker



Tripod (Medium) (M/S)



Gas Lighters



Grid (Big Box) (M/S)



Grid (Galjoen) (M/S)

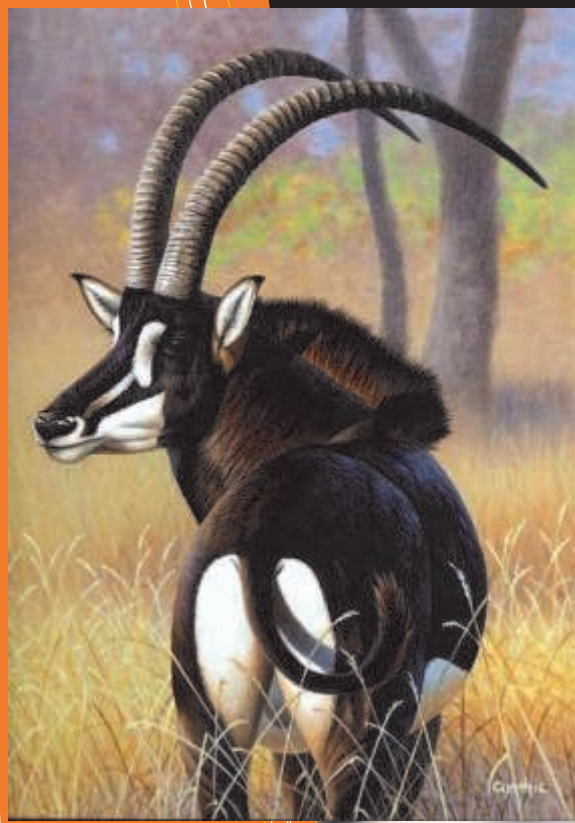


Smoker Oak Dust (315g)





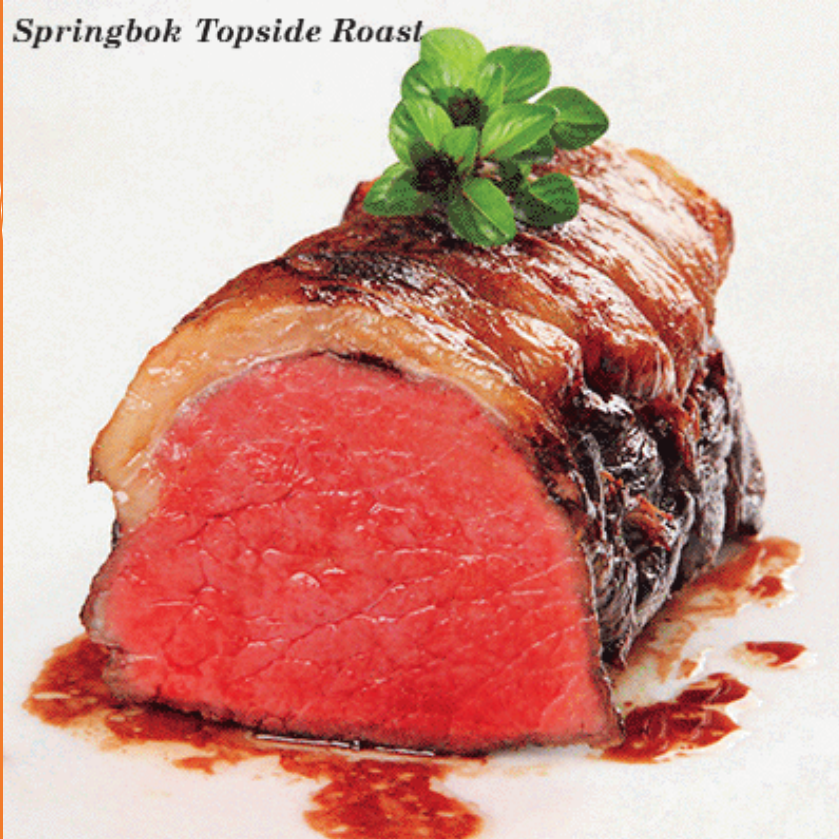
EXOTIC GAME & MEAT



We sell very unique and special products directly from Nature. We strive to protect the environment and not destroy what Nature offers us. We take every precaution, and ensure that we abide by all the laws, to not only protect the market we are in, but also to minimise the effects of man-made interferences on our products.

This quality control is not restricted to our Game and Meat range, but to every product that comes out of our factory. We strive to ensure that the products we sell to our customers, be it Game and Biltong, or Braai Wood or Décor Items, remains as close to the natural products that comes from Mother Earth. All our meat is sold in 10kg packs.

Springbok Topside Roast



Blesbok Rump



Kudu Sirloin

Impala Steak





Braaied Whole Chicken
Goat Curry



Roasted Quail with Pancetta



Gemsbok stuffed with Mushrooms



Ostrich Mince stuffed in Red Peppers



Lamb Goulash & Lamb Rack of Ribs



Blue Wildebeest Salami



Warthog Sirloin

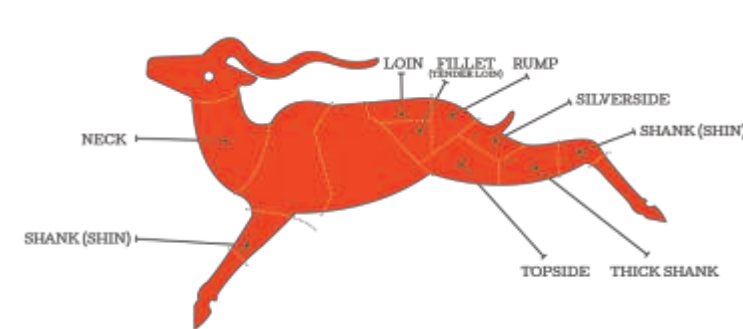


Zebra Haunch Steak



Eland Sirloin





<i>SPRINGBOK</i>	Springbok meat is one of the finest game meats available today. With its fantastic red colour, fine thread and subtle sweet game tastes, this meat is a must try for all. It is a great tender meat and makes excellent biltong , droerwors as well as a world class Carpaccio.
<i>GOAT</i>	Goat is an extremely tender and tasty meat that works perfectly when cooked slowly. It is comparable to Lamb and Beef, but can sometimes have a subtle game flavour. It is often used t o make a delicious curry.
<i>OSTRICH</i>	Ostrich meat is the best choice for the weight conscious consumer, as it is low in fat and lower in cholesterol than other red meats. This, as well as the iron content of ostrich meat, will greatly benefit people with an active lifestyle.
<i>ZEBRA</i>	Zebra meat is a beautiful deep red colour, has a medium grain and deliciously subtle game flavours. It is a very healthy meat, being lower in fact, low in cholesterol and high in protein. Be careful not to overcook this superb meat as its very low in fat.
<i>KUDU</i>	Kudu is often said to be the best tasting game meat in the world. It is a very dry meat so preparation and cooking must be done with care. It is also a very lean meat making it great for healthy eating. Kudu is renowned for its biltong and droerwors.
<i>ELAND</i>	Eland meat is a low fat red meat and very juicy and tender. Steaks should be served medium to rare. The meat contains half the calories of Beef and 6x less fat. Well known dishes are rump, sirloin steaks and stroganoff cuts of meat for gourmet dishes. It is also great for making bobotie and meatballs.
<i>IMPALA</i>	Impala is a red meat, very low in fat and has a medium grain texture. The meat is tender and should be served medium to rare. An assortment of dishes are made from Impala, including roast leg or shoulder casseroles, steaks, rib rack, potjies and bredies. Impala also makes a wonderful schnitzel.
<i>BLESBOK</i>	Blesbok is a dark, red meat with a unique wild game taste and the flavour should never be masked. It is used mainly in bredies and potjies. Due to its unique taste and texture, Blesbok makes a supreme Tartare and an excellent Carpaccio. Hamburger patties and meatballs never tasted this good.
<i>BLOU/BLUE WILDEBEEST</i>	Blou/Blue Wildebeest has a robust texture but is extremely low in fat and very tender. It can be cooked in a variety of ways whilst still retaining its taste. It is great for bredies and potjies and a well hung fillet is a winner cooked on the fire and served medium to rare.
<i>GEMSBOK/ORYX</i>	Oryx or Gemsbok meat is the superior meat choice. It is tender and smooth in texture, and can be used in many traditional beef recipes. It is an excellent choice for steaks and goulash and makes a wonderful and delicious sausage.
<i>WARTHOG</i>	Warthog is a succulent low fat choice of meat. It compares favourably with other pork type meats but contains preferred fatty acids. It can be used in a variety of dishes, and is an excellent choice for making salami and an assortment of sausages. Unlike normal pork, warthog is darker in colour and the skin cannot be eaten.
<i>QUAIL</i>	Quail meat is a sweet and delicate white game meat with extremely low skin fat and low cholesterol value. The meat is rich in micronutrients and a wide range of vitamins.



MUPANE ROOTS



The Mupane Roots that are sold for Décor purposes, comes from the roots of the Mupane Tree. They grow deep into the ground and need to be dug out. They are then loaded onto trucks and transported to our factory here in Cape Town. At our factory they are then cleaned and prepared for sale to our customers. The pieces range from 15cm up to 1,6 meters.



Every piece is like a fingerprint, and it is guaranteed that you will never ever find the same piece other than what you buy, see or have. Each piece is sold p/kg and large orders are packed onto pallets for delivery to clients.



MUPANE ROOTS - AQUARIUMS

Mupane Roots are hard and heavy and therefore sink easily to the bottom of any aquarium. Certain fish like to feed off the wood. It is a pretty wood and due to each piece being completely different and unique from the next, Mupane Roots are an exquisite addition to any aquarium. Mupane Roots give off a reddish-brown colour to the water and it does not affect the pH levels of the tank. In fact Mupane Roots actually soften the water, making aquariums containing this wood ideal habitats for almost any fish or tropical aquatic creature. Excellent at reducing pH and softening water, it can be identified by its distinctive solid structure, bi-tone colours and nodule like growths that protrude from its lengths. Mupane is a stronger wood and an excellent supportive base for more intricate plants or driftwoods.





MUPANE ROOTS - VIVARIUMS

Mupane wood is a relatively heavy and robust wood type, which is perfect for Vivariums and Terrariums, offering reptiles plenty of climbing and hiding space. It is treated to ensure that all natural parasites that would hide in or on the wood, have been removed. This ensures that the Mupane Roots you purchase for your Vivariums and Terrariums, are healthy products and safe for your reptiles.





Mupane Roots with their amazing and unique shapes and colours can be used in so many ways to enhance your home, garden and tables.

Namibian Hardwood Pty Ltd. is sought out by many Wedding Planners, Interior Decorators and Designers, as well as Landscapers and Horticulturists, for individual and specialised pieces for their work. We make sure that the product you receive is unlike any other and no other piece will ever be the same.



MUPANE ROOTS - DECOR



WILD VINES



Our Wild Vines are in great demand with the Pet Industry due to their amazing and beautifully contorted shapes and colours. Many aviaries sell out the moment stock arrives, as these beautiful and unique pieces of wood are favourites with inquisitive and active birds like parrots. These attractive pieces of wood are also greatly sought after by Interior Designers and Wedding Planners, and used in modern homes and establishments as focal points and centrepieces. With so many Companies and Individuals going 'green' these days, Wild Vines are guaranteed to create a natural look in your office, home or pet's play place unlike any other, and definitely one of a kind.





7) 77cm x 30cm ~ 2.2kg.JPG



7.1) 77cm x 30cm ~ 2.2kg.JPG



10) 87cm x 59cm ~ 2kg.JPG



10.1) 87cm x 59cm ~ 2kg.JPG



8) 62cm x 38cm ~ 480gr.JPG



8.1) 62cm x 38cm ~ 480gr.JPG



11) 1.1m x 39cm ~ 2.5kg.JPG



11.1) 1.1m x 39cm ~ 2.5kg.jpg



9) 53cm x 27cm ~ 250gr.JPG



9.1) 53cm x 27cm ~ 250gr.JPG



12) 29cm x 22cm ~ 230gr.JPG



12.1) 29cm x 22cm ~ 230gr.JPG

Please note that the sizes and weights of the wood shown above are merely indications of what we sell at Namibian Hardwood Pty Ltd. Every piece is unique and different thereby ensuring that you buy a product unlike any other. Customers residing in the Cape Town area are invited to come in and choose their own pieces, whilst our customers living abroad and in other provinces in South Africa, rely on our good judgement and sound knowledge of our products to choose unique and beautiful pieces for them.



4) 29cm x 21cm ~ 190gr.JPG



4.1) 29cm x 21cm ~ 190gr.JPG



5) 69cm x 62cm ~ 1.8kg.jpg



5.1) 69cm x 62cm ~ 1.8kg.JPG



6) 82cm x 33cm ~ 1kg.JPG

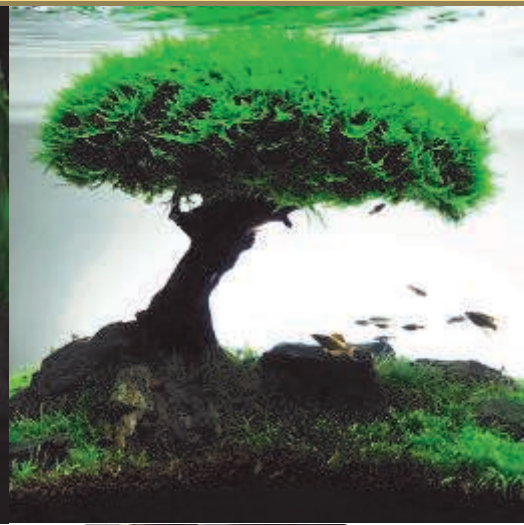


6.1) 82cm x 33cm ~ 1kg.jpg



WILD VINES - AQUARIUMS

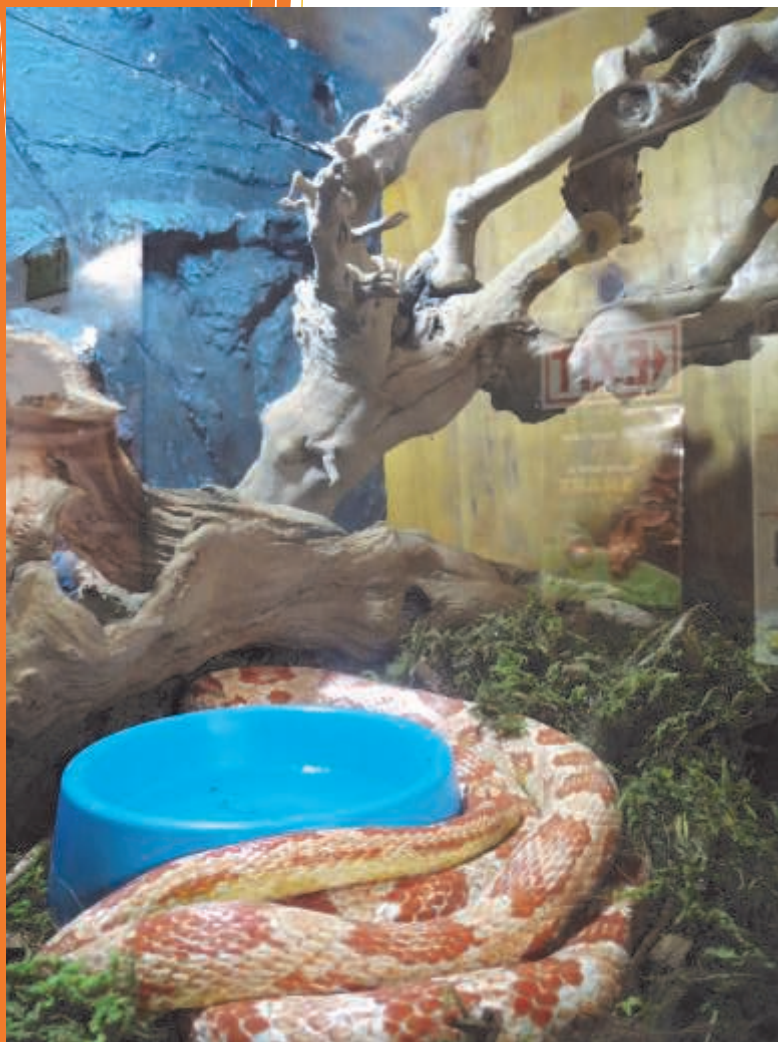
Wild Vines are becoming increasingly popular amongst Aquascapers due to their exquisite twisted and knotted beauty. They are lighter than the traditional Mupane Roots used in aquariums. However, they can be secured to the bottom of a tank with rocks, sand or pebbles. Aquascaping is the art of setting up an aquarium to look as natural as possible, whilst also creating an award-winning showpiece. Wild Vines are perfect for creating underwater forests and trees, as moss and other plants grow easily on them. They do release a light colour and tannins like Mupane Roots, so it is best to soak the vines for approximately a week before adding them to your tank.



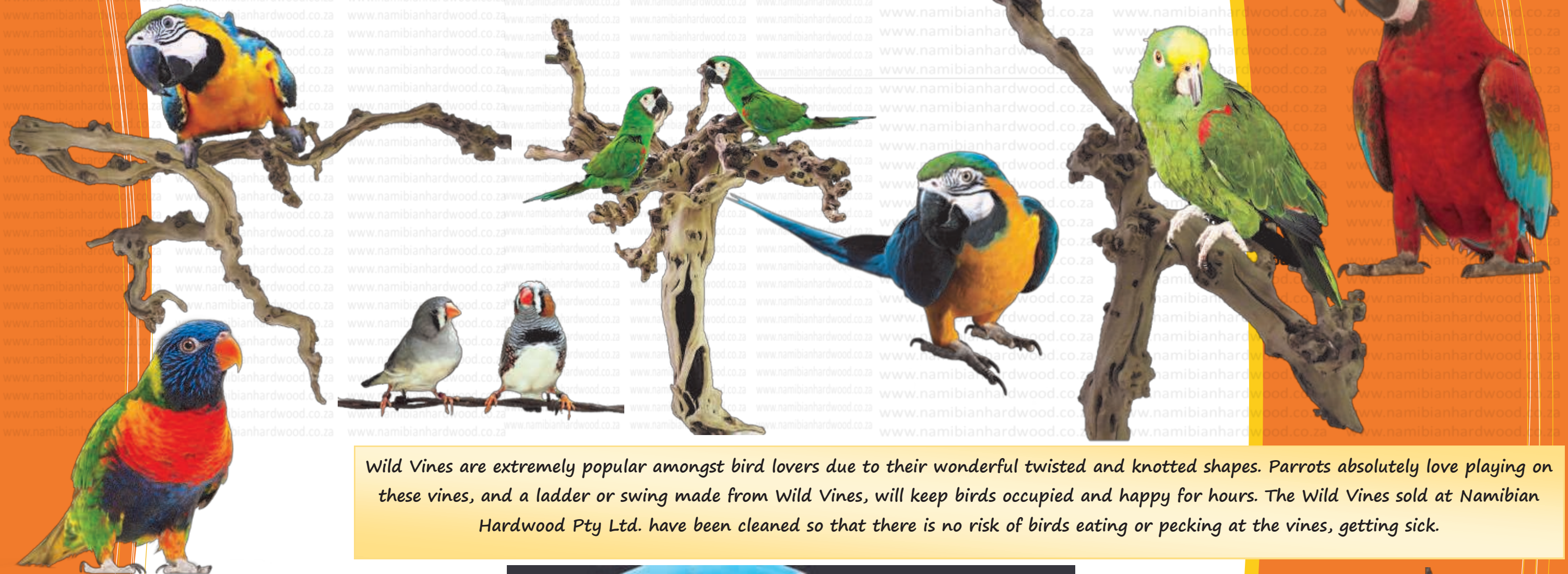
WILD VINES - VIVARIUMS



Wild Vines are extremely popular amongst Reptile owners and collectors due to their beautiful twisted and knotted beauty. All the Wild Vines sold by Namibian Hardwood Pty Ltd. have been cleaned and treated to ensure they are free of any parasites that would normally live in the wood, thereby ensuring that the products you buy from our Company, are safe for your pets and livestock.



WILD VINES IN AVIARIES



Wild Vines are extremely popular amongst bird lovers due to their wonderful twisted and knotted shapes. Parrots absolutely love playing on these vines, and a ladder or swing made from Wild Vines, will keep birds occupied and happy for hours. The Wild Vines sold at Namibian Hardwood Pty Ltd. have been cleaned so that there is no risk of birds eating or pecking at the vines, getting sick.

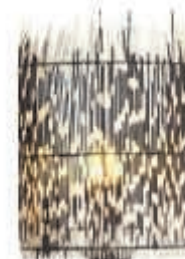




DESIGNERS & DECORATORS

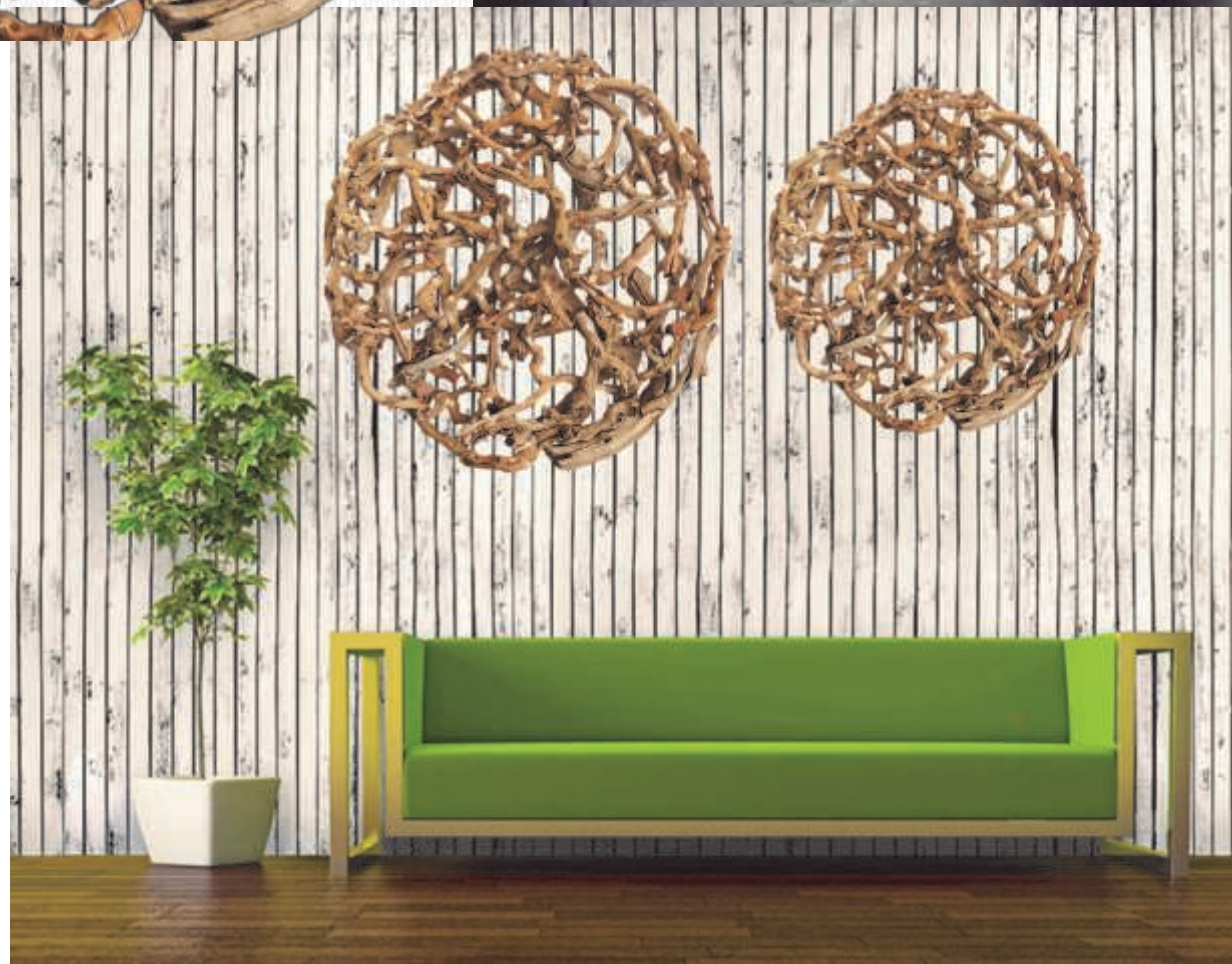
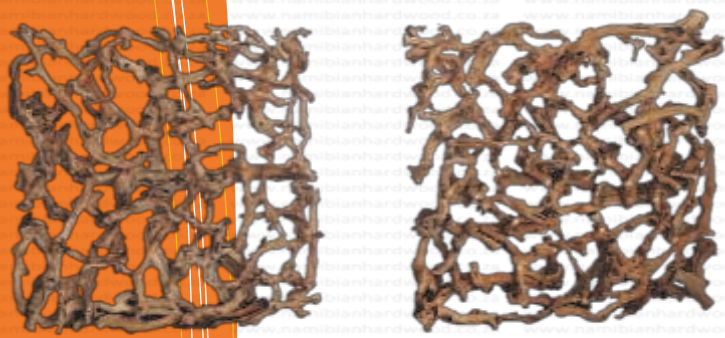


With such a high demand for new and innovative designs, and the competition to have the latest trends and designs in homes and offices, Namibian Hardwood Pty Ltd. are continually exploring and manufacturing one-of-a-kind showpieces to enhance any room. Whether you are looking to redo an entire room, or decorate a table for that special occasion, Namibian Hardwood Pty Ltd. has the right product for you. We also do customized pieces on special request. (Please note that all photos shown are examples of what can be done with our products).



WALL MOUNTS

Namibian Hardwood Pty Ltd. is continually exploring and manufacturing one-of-a-kind showpieces to enhance any home or office. One of our new and signature products is Wall Mounts. Made from beautiful and naturally twisted Wild Vines, we manipulate and work this beautiful wood into exquisite pieces of artwork such as hearts, moons, squares and fish shapes.



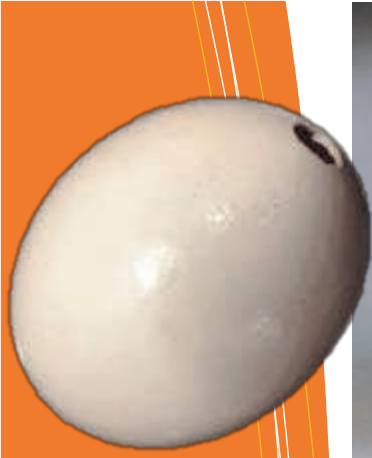


AFRICAN CURIOS & DECOR



Over the last 10 years, Namibian Hardwood Pty Ltd. Has branched out to sell and produce specialised African products which are sought after by many artists, Designers and Decorators, for unique and beautiful items for homes, office and events. As a wholesale Company, we do not manufacture the retail or end-use products and the photos seen in this Catalogue, are merely examples of what our clients have done with our products.





OSTRICH SHELLS

The Ostrich Shells sold by Namibian Hardwood Pty Ltd. are purely for decorative purposes. We do not paint them or work artistically on them in any form. Artists and Curio Shops buy the Ostrich Shells from us wholesale, and then employ gifted craftsmen to paint and decorate these shells for sale to the public and tourist trade. All our Ostrich Shells are treated and cleaned to ensure that the product sold, is free of all yolk residue and bacteria, thereby ensuring that the Ostrich eggs sold by Namibian Hardwood Pty Ltd. are of a world class standard



SKULLS

All skulls sold at Namibian Hardwood Pty Ltd. are cleaned to remove all meat residue and bacteria, ensuring that our customers buy a product that will enhance any room they are placed in, and become a showpiece and fantastic topic of conversation. They are regulated by the Hunting Association and Namibian Hardwood Pty Ltd. only works with Companies that fall under this Association.

Baboon Skull



Dassie Skull



Gemsbok Skull



Kudu Skull



Crocodile Skull



Rooibok Skull



Warthog Skull



Springbok Skull



Wildebeest Skull





KUDU HORNS

Greater and lesser Kudu males have long, spiral horns and occasionally a female will have small ones. The greater Kudu's horns are spectacular and can grow as long as 180cm, making 2 1/2 graceful twists. These beautifully shaped horns have long been prized in Africa for use as musical instruments, honey containers and symbolic ritual objects. Kudu horns are extremely popular and used extensively for making Shofars. Kudu horns were also originally used as 'Vuvuzelas', a musical form of instrument used by many soccer fans. It is called a 'Kuduzela'. The horn inners are also cleaned and polished to a brilliant white and used to make lampstands, chandeliers and many other ornamental and decorative items.



HORNS & TUSKS

Horns are the pointed protrusions found predominantly on the head of animals such as antelope. Tusks are very similar to horns but are in fact teeth that are too large to fit in an animal's mouth. Both are very popular amongst designers, decorators, sculptors and artists, due to their beautiful patterns, twist and twirls. Horns and tusks are used to create many unique and exquisite items, ranging from wall mounts to cigar cutters and bottle openers. Tusks are often used in jewellery.





BLACK WILDEBEEST



BLUE WILDEBEEST



AFRICAN BUFFALO



ELAND



GEMSBOK



IMPALA



KUDU



NGUNI



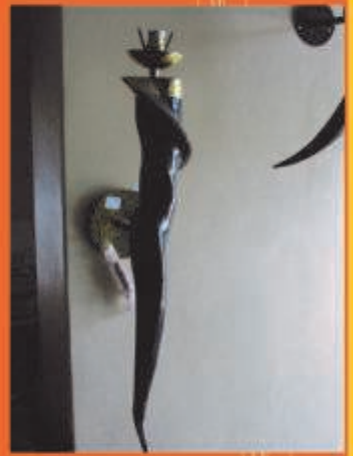
ROOIBOK



SPRINGBOK



WARTHOG





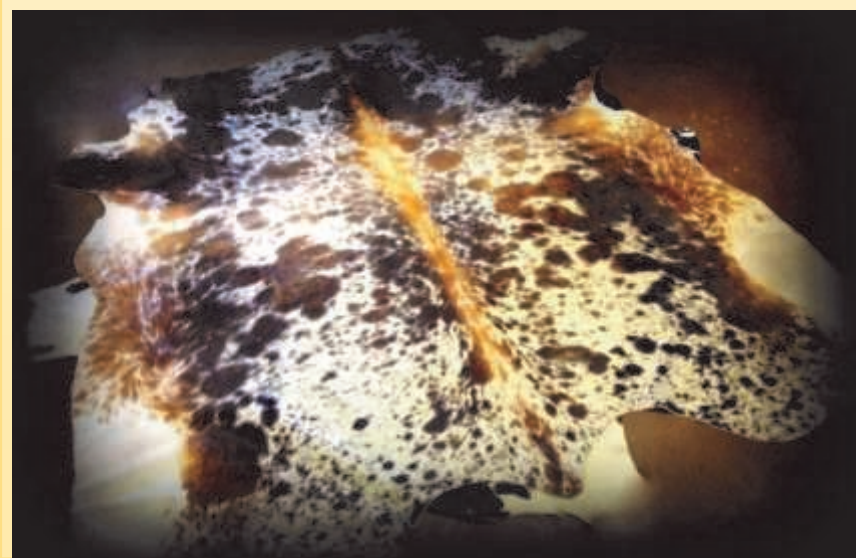
KUDU HORN SHOFARS

We turn dirty and grubby Kudu horns into beautiful Shofars. We take the time to polish our horns, anything between 3-18 hours, depending on the size and quality of the raw horns, to ensure you buy a quality sound product. We have a variety of Shofars: fully polished, half polished/half natural, and natural. Our horns range in length from 30cm - 120cm.



HIDES & SKINS

Animal hides are stretched, dried, and tanned. The skins and hides supplied by Namibian Hardwood Pty Ltd. come from the finest specimens. No skin or hide is the by-product of caged hunting. Our products are of the finest quality and as no two animals are alike, each piece is uniquely beautiful and different.

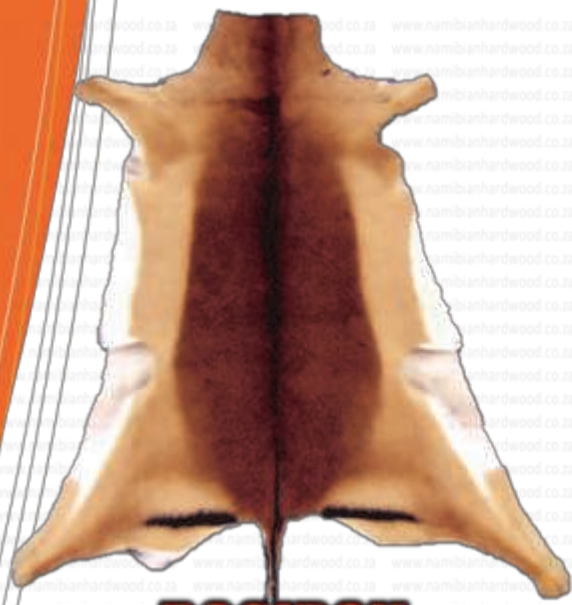




BLESBOK



KUDU



ROOIBOK



ORYX/GEMSBOK



NGUNI



SPRINGBOK



IMPALA



RED HARTEBEEST



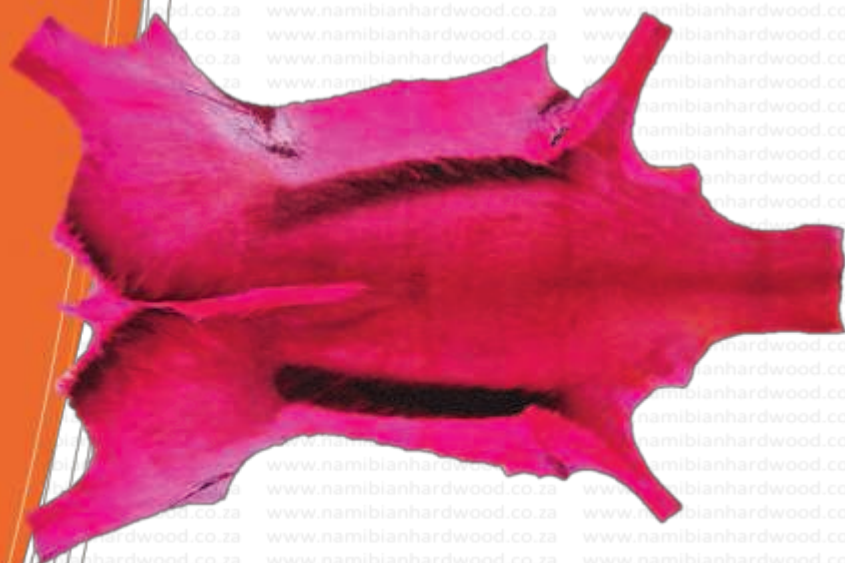
ZEBRA



SPRINGBOK - RED



SPRINGBOK - BLUE



SPRINGBOK - PINK



SPRINGBOK - YELLOW



SPRINGBOK - PURPLE



SPRINGBOK - ORANGE



SPRINGBOK - GREEN



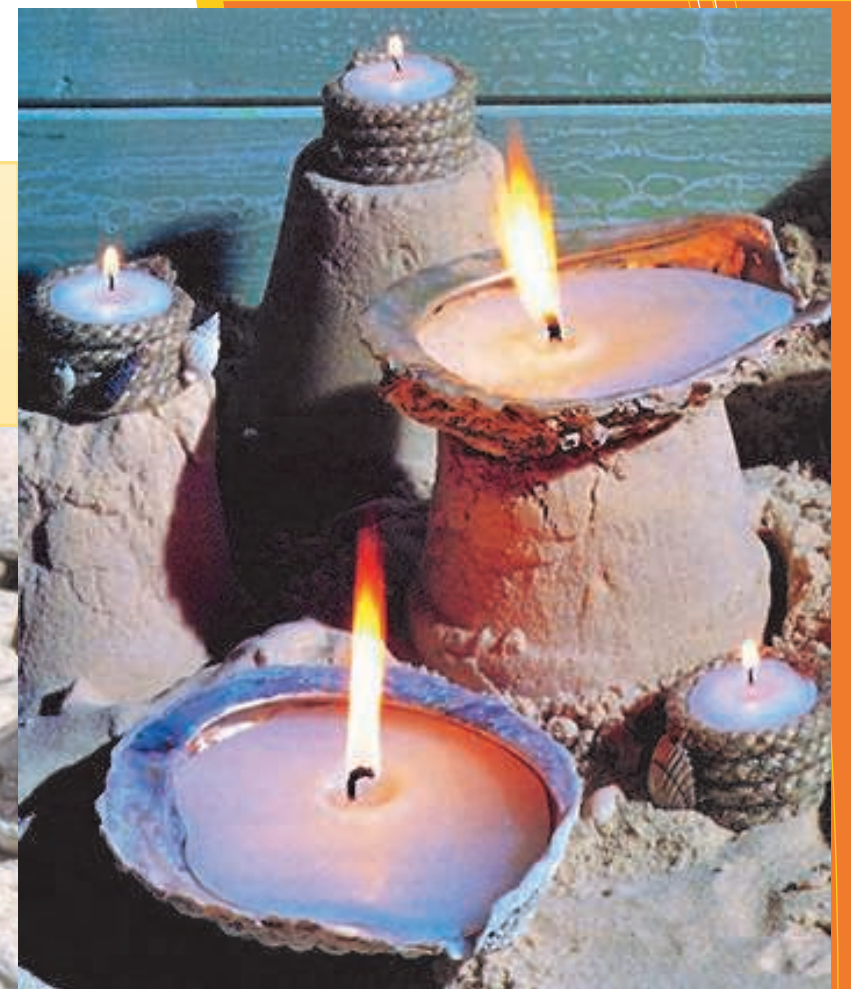
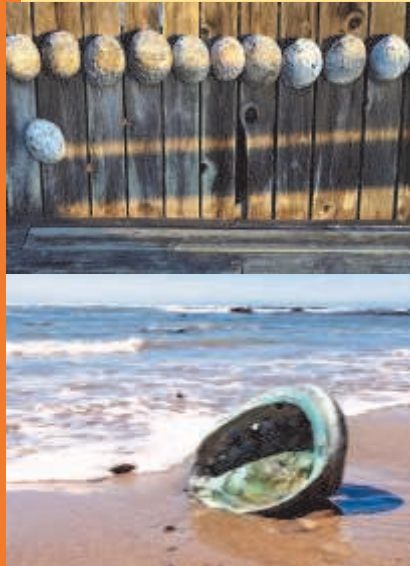
SPRINGBOK - BLACK





ABALONE SHELLS

The meat (foot muscle) of abalone is used for food, and the shells of abalone are used as decorative items, and as a source of mother of pearl for jewellery, buttons, buckles, candles and inlay. Namibian Hardwood Pty Ltd. has all the necessary permits and documentation in place to sell Abalone Shells and we only work with registered farmers who are governed by the Southern African authorities.



CANDLE HOLDERS

At Namibian Hardwood Pty Ltd., we use natural products to make various and unique candle holders. They can be used around the home and are very popular with Wedding Planners and Decorators, as part of centrepieces at events and functions. Due to their beautiful and natural shapes and colours, they enhance any centrepiece and can often be the main attraction and a topic of discussion around the table.



SUCCULENT ROCKS

With the revival of interest in growing succulents, there has been a flurry of magazine articles, books and TV programmes about how to go about creating a succulent garden. Succulents are a variety of cacti that are simple to grow. The plants adjust their roots to accommodate the amount of water they receive, meaning that you can miss a few waterings and the plants will adjust accordingly.



CURIOS & JEWELLRY



KEY RING



WIDE MULTIBEAD WHITE & BLACK BRACELET



WIDE MULTIBEAD WHITE & BROWN BRACELET



WHITE & BLACK LEATHER BRACELET



RED BRACELET



WIDE MULTIBEAD WHITE & BROWN BRACELET



TWO-TONE WOOD BRACELET



WHITE & BROWN LEATHER BRACELET



YELLOW BRACELET



GEMSTONES



Namibian Hardwood Pty Ltd. trades and sells A and B grade gemstones. A grade gemstones are used for the jewellery market. All our gemstones are legally mined, and all the necessary legal permits are in place, as well as the documents to trade these stones. B Grade gemstones are used mainly for landscaping and interior decorating purposes.

All our gemstones are available in rough or tumbled bags. Tiger Eye is illegal to harvest or source. However, Tiger Eye Matrix is legal, and Namibian Hardwood Pty Ltd. have ensured that these are the stones we trade and sell. All gemstones sold by Namibian Hardwood Pty Ltd. are mined, collected and transported under license, and those found in rural areas, provide economic relief to the local inhabitants of these communities.



AVENTURINE



1Adventurine Pebbles Small +/- 5cm x 2cm .jpg



4Adventuring Crush Medium +/- 6cm x 2cm .jpg



2Adventuring Pebbles Medium +/- 6cm x 2cm .jpg



5Adventuring Crush Large +/- 11cm x 4cm .jpg



3Adventurine Crush Small +/- 5cm x 2cm .jpg



6River Pebble Mix +/- 12cm x 6cm .jpg

AFRICAN TURQUOISE



1African Turquoise Pebbles small +/- 5cm x 2cm .jpg



4African Turquoise Crush Small +/- 2cm x 1cm .jpg



2African Turquoise Pebbles Med +/- 6cm x 2cm .jpg



5African Turquoise Crush Med +/- 6cm x 2cm .jpg



3African Turquoise Pebbles Large +/- 11cm x 4cm .jpg



6African Turquoise Crush Large +/- 11cm x 4cm .jpg

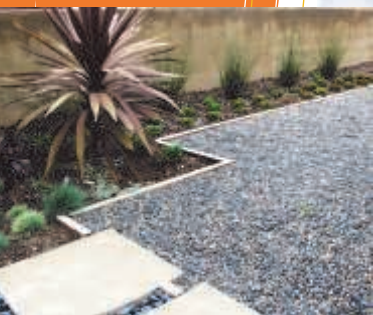
Aventurine is a form of quartz. The most common colour is green, but it may also be orange, brown, yellow, blue or grey. Most stones are carved into beads and figurines with only the finer grades being used for fashion cabochons and in jewellery settings. Its name originates from the Italian *a ventura* or *all'avventura*, meaning "by chance," and refers to the Italian glass from the 1700s, produced when a worker accidentally dropped metal filings into a vat of melting glass.

The name *Aventurine* was later given to the natural stone, which looked like the industrial product. Due to its gorgeous and rich green colour, it has often been mistaken for Jade and is in fact now used as an alternative, as real Jade is expensive, and considered in some countries to be more valuable than gold or diamonds.

African Turquoise is a type of Jasper and is not Turquoise at all. Real Turquoise is a rare gemstone whilst Jasper is abundant. African Turquoise is a form of chalcedony and has less regular patterns than that of quartz. They vary in colour, and a great advantage of African Turquoise, is that it is harder than genuine Turquoise. At Namibian Hardwood Pty Ltd., we ensure that the product we sell to you is the natural stone, and has not been artificially dyed or enhanced in any way to try and represent real Turquoise.

BLACKSTONE

Black Stone is a rock fragment smaller than a cobble. Sizes of this gemstone range from 10mm to 150mm. Due to the effects of erosion, Black Stone gets naturally tumbled with flowing river water from mountains towards plains. It is a wonderful stone for landscaping and garden design, giving great contrast to any setting.



1Black Stone Pebbles Small +/- 5cm x 2cm.jpg



4Black Stone Crush Small +/- 2cm x 1cm.jpg



2Black Stone Pebbles Med +/- 6cm x 2cm.jpg



5Black Stone Crush Med +/- 6cm x 2cm.jpg



3Black Stone Pebbles Large +/- 11cm x 4cm.jpg



6Black Stone Crush Large +/- 11cm x 4cm.jpg

BUDSTONE

Budstone, also known as Verdite/African Jade/Buddstone, is a member of the Mica Group of gemstones. It is very popular amongst artists doing carvings due to its unusual green colouring, and the fact that it is softer than other stones, making carving and sculpting a breeze. Verdite rough is no longer being exported outside Africa and is now difficult to obtain.



1Budstone Pebble Small +/- 5cm x 2cm.jpg



4Budstone Crush Small +/- 2cm x 1cm.jpg



2Budstone Pebble Med +/- 6cm x 2cm.jpg



5Budstone Crush Med +/- 6cm x 2cm.jpg



3Budstone Pebble Large +/- 11cm x 4cm.jpg



6Budstone Crush Large +/- 11cm x 4cm.jpg



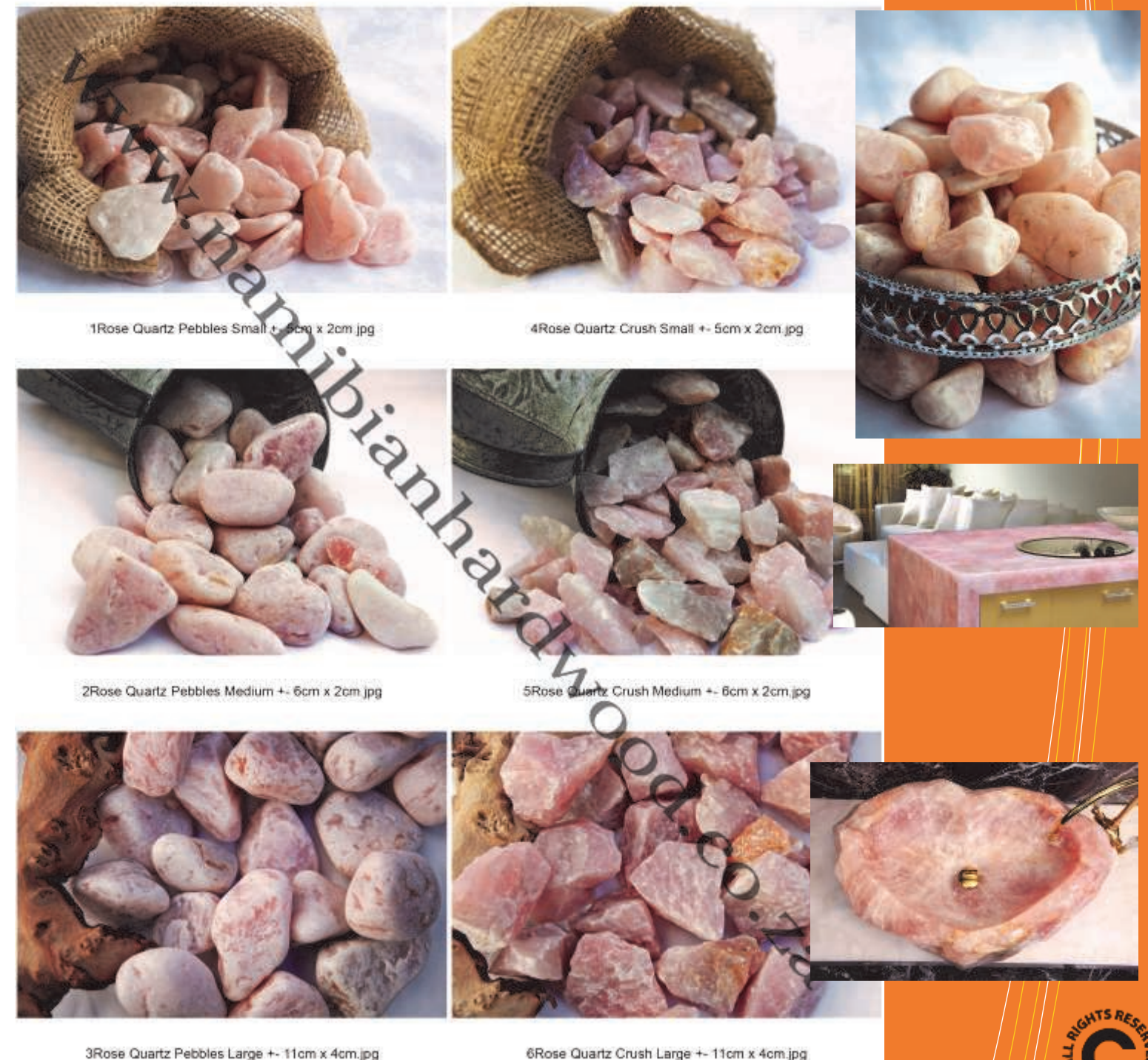
PICTURE JASPER

This stone with its natural tones and hues, has become a sought after attraction in driveways, pathways and any area where a 'normal' garden would grow. It has also found popularity amongst landscapers and garden designers. Due to its unusual and striking patterns, River Jasper is being used more and more in modern homes for a natural stone finish in kitchens, living rooms and bathrooms.



ROSE QUARTZ

Rose Quartz is often called the Love Stone due to its pinkish colour. It is an abundant and common stone. The pink colour of rose quartz ranges from a very light, almost imperceptible pink, to a rich translucent pink. It is usually cut into cabochons, beads, and faceted stones of about eight millimetres in size or larger to display the rich pink colour. Pieces of rose quartz up to a few pounds in size with nice colour, are usually available and relatively inexpensive. For that reason it is commonly used to produce small sculptures, puffed hearts, spheres, and utility items.



RED JASPER

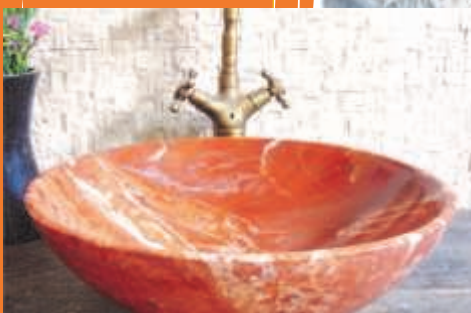
Red Jasper is one of the oldest gemstones known. It is a beautifully coloured stone and is found naturally in a variety of shades and colours. The most common colour being a reddish earthy tone, streaked with veins of other colours, making it a vibrant stone with lively characteristics. It is one of the most popular stones used amongst landscapers and garden designers due to its fantastic colouring.



1Red Jasper Pebbles Small +- 5cm x 2cm .jpg



4Red Jasper Crush Small +- 2cm x 1cm .jpg



2Red Jasper Pebbles Med +- 6cm x 2cm .jpg



5Red Jasper Crush Med +- 6cm x 2cm .jpg



3Red Jasper Pebbles Large +- 11cm x 4cm .jpg



6Red Jasper Crush Large +- 11cm x 4cm .jpg

SODALITE

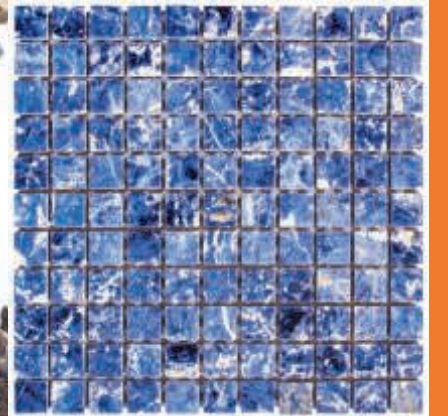
A rich royal blue mineral widely enjoyed as an ornamental gemstone. It is an extremely attractive stone, and used in a variety of ways. It is used extensively amongst tilers and builders for kitchen countertops, washbasins and splashbacks and various landscaping projects.



1Sodalite Pebbles Small +- 5cm x 2cm .jpg



4Sodalite Crush Small +- 2cm x 1cm .jpg



2Sodalite Pebbles Med +- 6cm x 2cm .jpg



5Sodalite Crush Med +- 6cm x 2cm .jpg



3Sodalite Pebbles Large +- 11cm x 4cm .jpg



6Sodalite Crush Large +- 11cm x 4cm .jpg



UNIKITE

Unikite is a granite stone and good quality stones are considered semi-precious. They are used predominately for jewellery and carvings. It has unusual colouring and is popular amongst landscapers and garden designers as an attractive feature, or to enhance a showpiece.



1Unikite Pebbles Small +- 5cm x 2cm.jpg



4Unikite Crush Small +- 2cm x 1cm.jpg



2Unikite Pebbles Med +- 6cm x 2cm.jpg



5Unikite Crush Med +- 6cm x 2cm.jpg



3Unikite Pebbles Large +- 11cm x 4cm.jpg



6Unikite Crush Large +- 11cm x 4cm.jpg



WHITE QUARTZ



1White Quartz Pebbles Small +- 5cm x 2cm.jpg



4White Quartz Crush Small +- 2cm x 1cm.jpg



2White Quartz Pebbles Med +- 6cm x 2cm.jpg



5White Quartz Crush Med +- 6cm x 4cm.jpg



3White Quartz Pebbles Large +- 11cm x 4cm.jpg



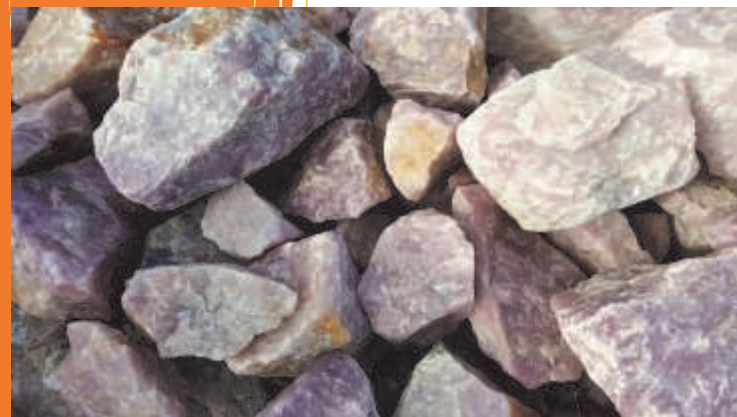
6White Quartz Crush Large +- 11cm x 4cm.jpg



White quartz is extremely popular with tilers and builders. With its beautiful and brilliant white colour it is a favourite to use in kitchens and bathrooms. It is a hard stone making it durable and long-lasting.

PURPLE QUARTZ

Purple quartz is extremely popular because of its strikingly beautiful colour. It was once considered to be as precious as sapphires, rubies and diamonds, until large deposits were found in Brazil and other parts of the world. The better quality rocks are used predominantly in the jewellery and fashion markets. The purple quartz sold by Namibian Hardwood PTY Ltd. is used mainly in Landscaping and Horticultural businesses.

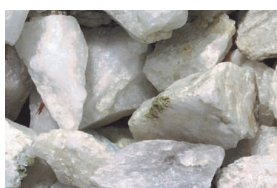
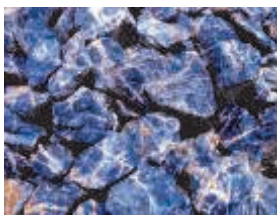
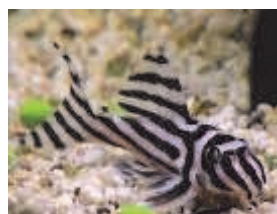


GREEN QUARTZ

Green Quartz is just as unique and beautiful in its own way as purple quartz is. It adds beautiful colour and texture to any garden setting.

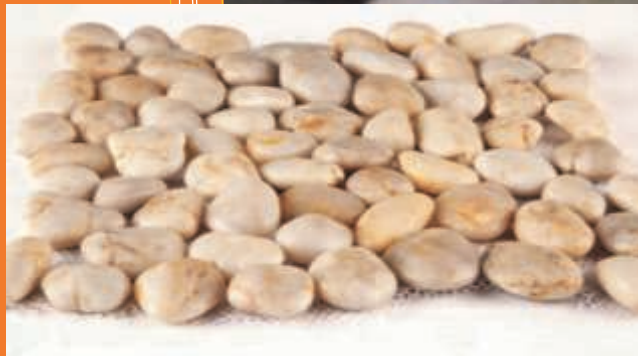


GEMSTONES - PET INDUSTRY

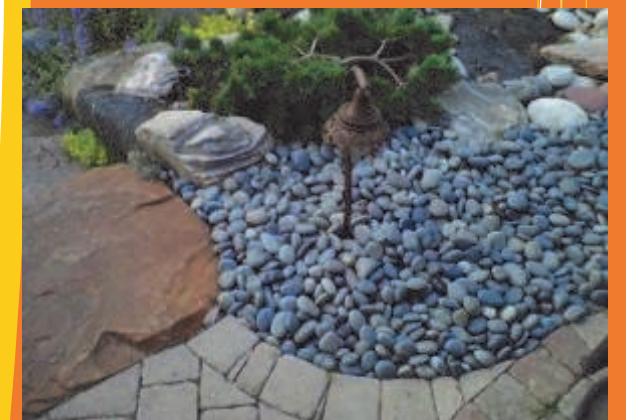




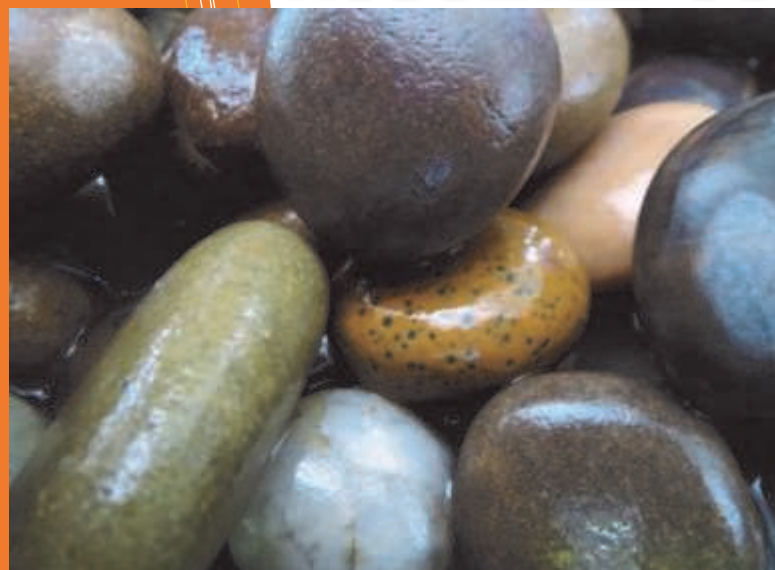
RIVER PEBBLES



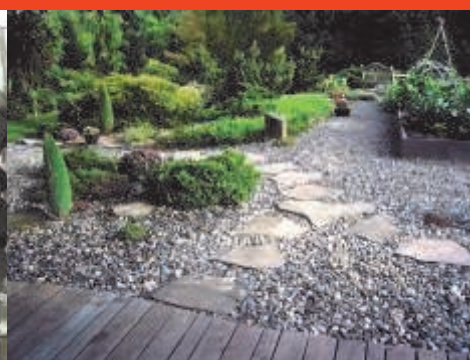
Pebbles are used for a variety of purposes, both outdoors and indoors. Pebbles are often used for landscaping, construction and as decorative elements. They are often used to cover walkways and driveways, around pools, in and around plant containers, and on patios and decks. River pebbles are also used to create water-smart gardens in areas where water is scarce. River pebbles are also used as tiling for floors and walls, and give any room a beautiful natural and cool look.



ASSORTED COLOUR

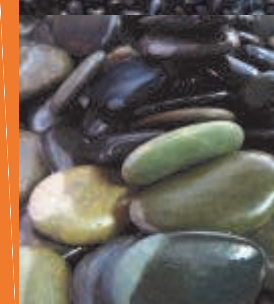


Beautiful and varied coloured River Pebbles roughly 2.5cm x 3cm, these gorgeous pebbles are great for pathways, and placing between stepping plates. Their different colours and hues make them an attractive feature for any garden. They are also safe for Aquarium use.



BLACK MARLIN

This dark to almost black stone is very popular amongst garden designers and landscapers. It creates a striking contrast to any setting and is often found in walkways and garden paths. These pebbles are roughly 3.5cm - 3cm in diameter. These natural stone pebbles are smooth to touch and great for bathroom floors or a kitchen backsplash.



BON BONS

Bon Bon River Pebbles are large, oversized, round river stones. They are blue-grey to brown in colour and are approximately 120cm-11cm in size. They are a hard and durable stone, suitable for use as round gabion rock, drainage, erosion control and landscaping ideas.



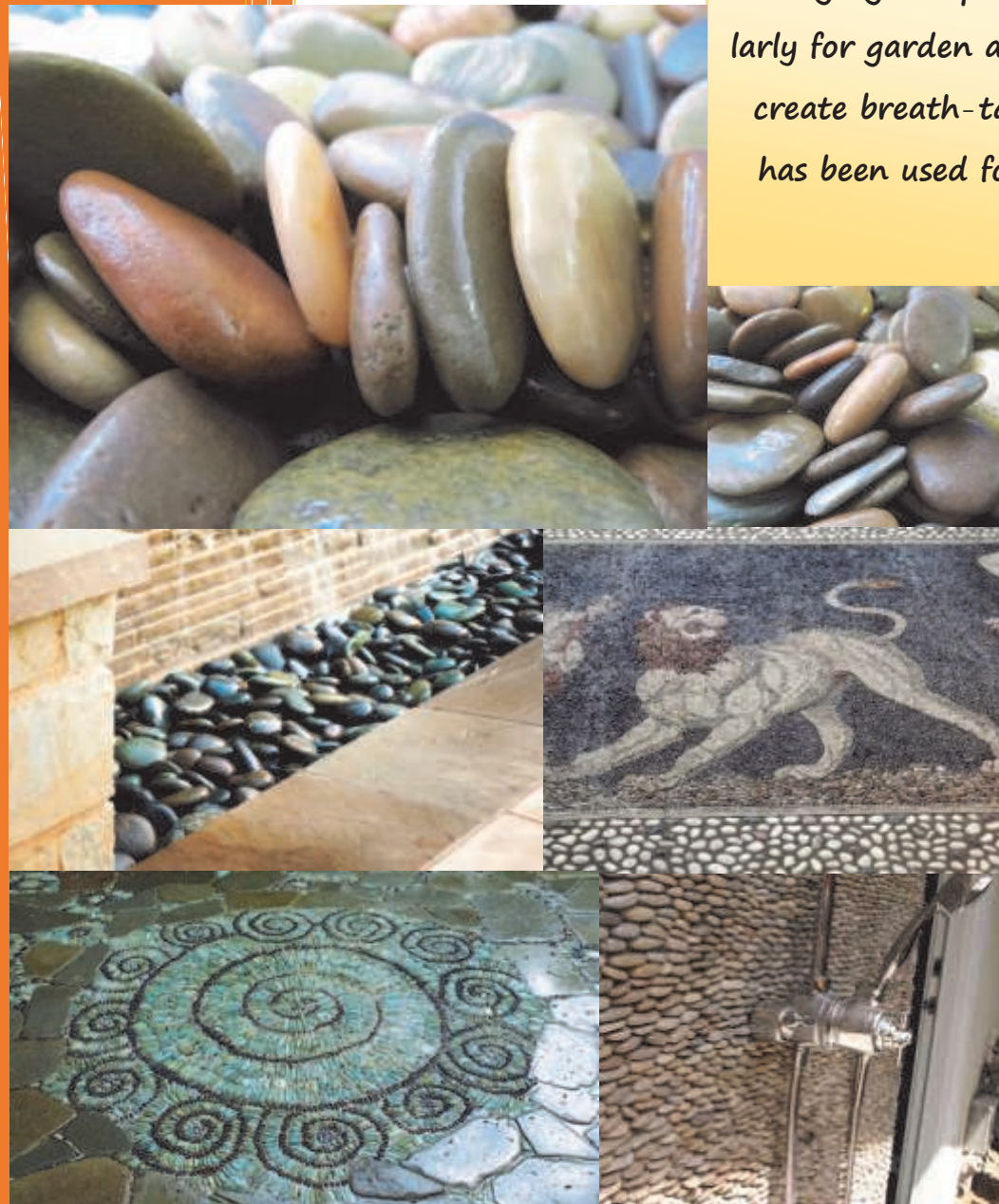
These beautiful and colourful stones look as though you've stepped onto the beach. It is a very versatile stone and can be used in garden, landscaping designs and interior décor ideas. It is also a great stone to use DIY arts and crafts. It is approximately 2.5cm-2.8cm in size. They are also used in gas fire pits.



MARINE

MOSAIC B

This gorgeous pebble is the most popular of all River Pebbles used to create mosaics for DIY arts and crafts, but more particularly for garden and landscaping mosaics. The wonderful shape of this pebble allows garden designers, landscapers and artists to create breath-taking and spectacular showpieces. It is an easy to pebble to work with is approximately 3.5cm-2cm in size. It has been used for centuries by ancient artists to create some of the most historic walls and floors throughout the world. One example is Dionysos House, found in Pafos Archaeological Park, Greece.



OCEAN HUES



This popular stone is used by many designers and interior decorators when creating bathrooms. The cool colours of this pebble give the feeling of being close to the ocean. It is used in many seaside homes for this reason. This pebble is approximately 4cm-3.5cm in size. It is also used to create splashbacks in kitchens and bathrooms.

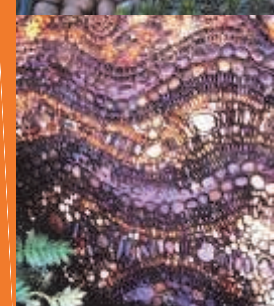
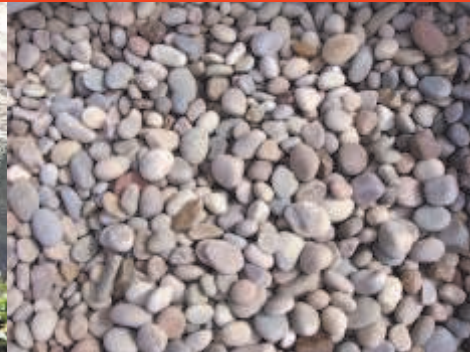
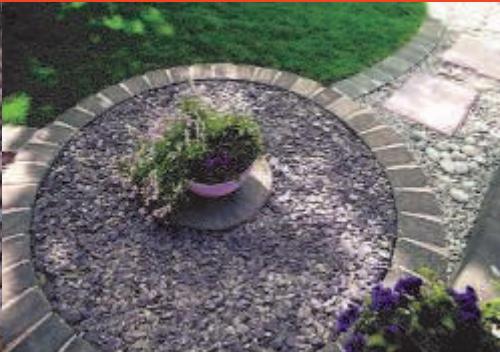
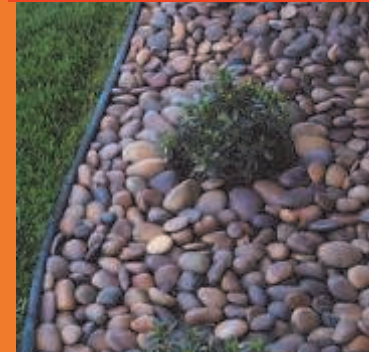
OCHRE



The warm and rich colour of these pebbles make them a favourite for Home décor ideas such as placemats for the table and doormats. They vary in size from 1cm-5cm. It is also used in landscaping and garden designs, adding depth, warmth and texture to any setting.



PLUM

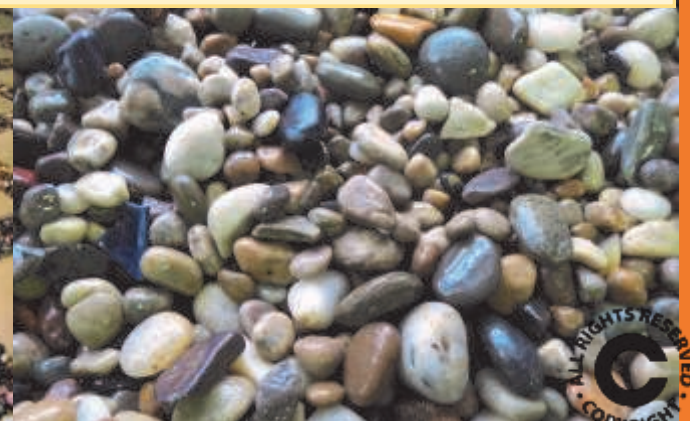
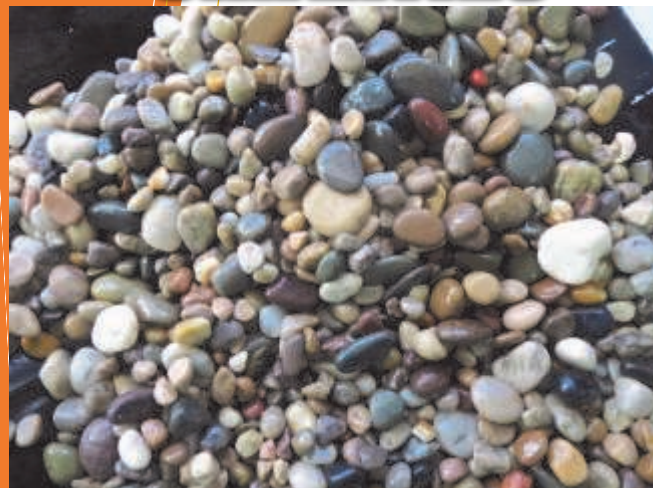


Plum River Pebbles are a beautiful decorative stone, very popular in gardens around the world. It is a very versatile pebble that can be used in driveways, garden borders, water features or even to suppress and control weeds. This pebble can fracture into flat pieces when being sized giving it a unique appearance. It is approximately 4.5cm-3cm in size.



SMARTIES

This small pebble is approximately 1cm-0.5cm in size and is great for filling the gaps between large pebbles and stones in any garden or landscaping design. It is also used by interior designers to create a softer looking, natural stone floor that is easier to walk on.



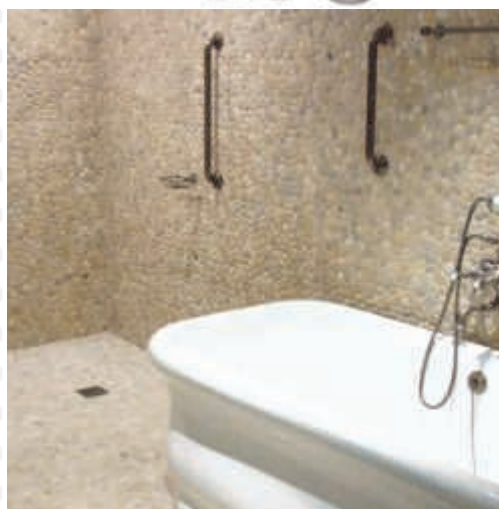
WHITE B

White B River Pebbles range from an off-white greyish colour to a bright white. With their brilliance and stylish, naturally semi-polished edges, these river pebbles are suitable for rockeries, gardens and almost any decorative application.

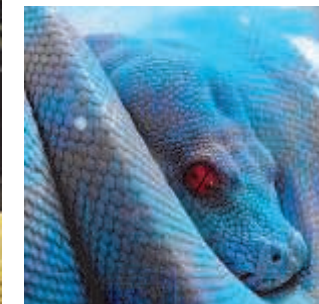


RIVER PEBBLE TILES

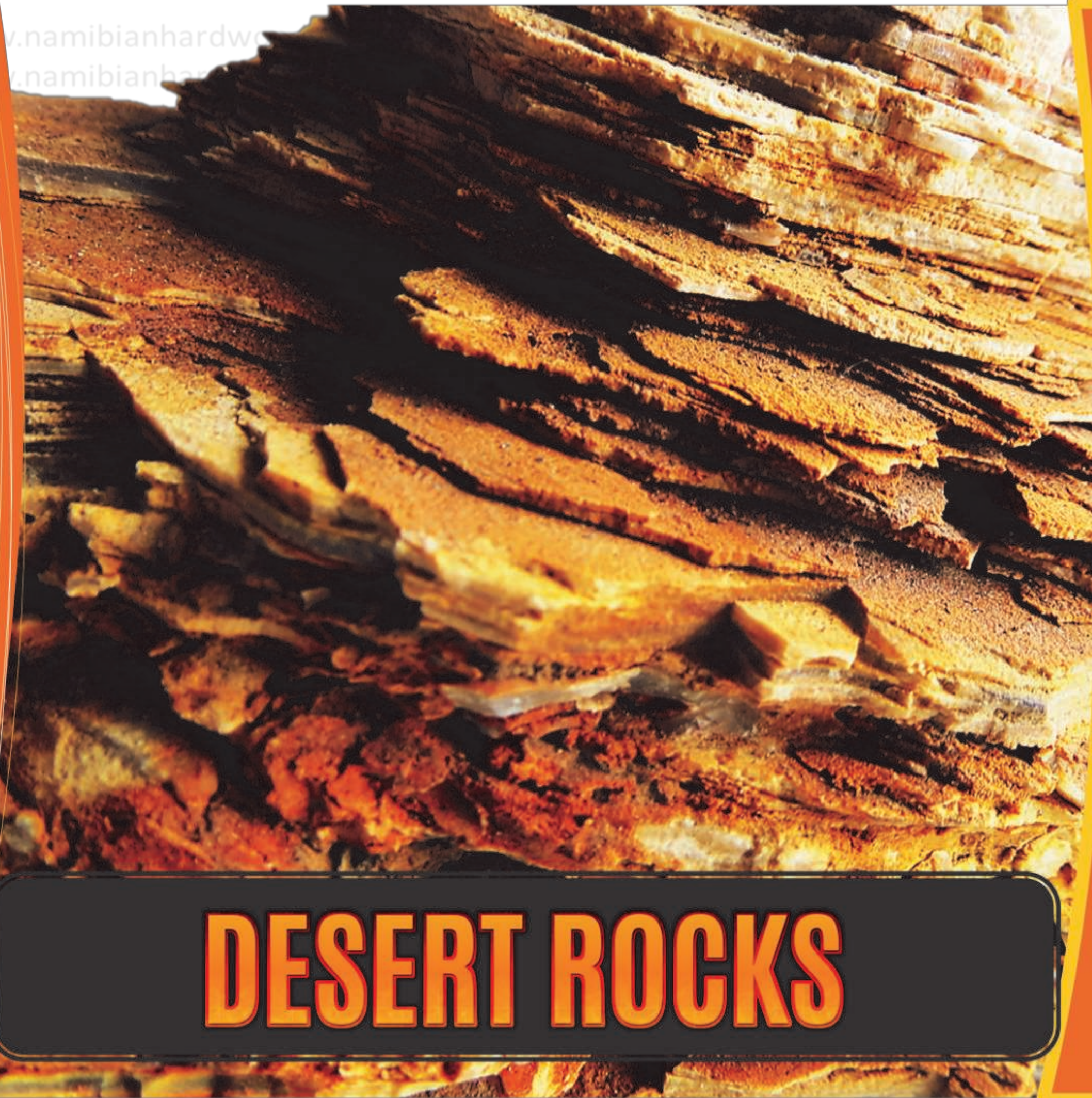
River Pebble Tiles are tile mosaics made from various river pebbles. They are sold by the m2. The smooth, organic surfaces of these pebble tile mosaics create a rustic, yet luxurious look in any room where they are used.



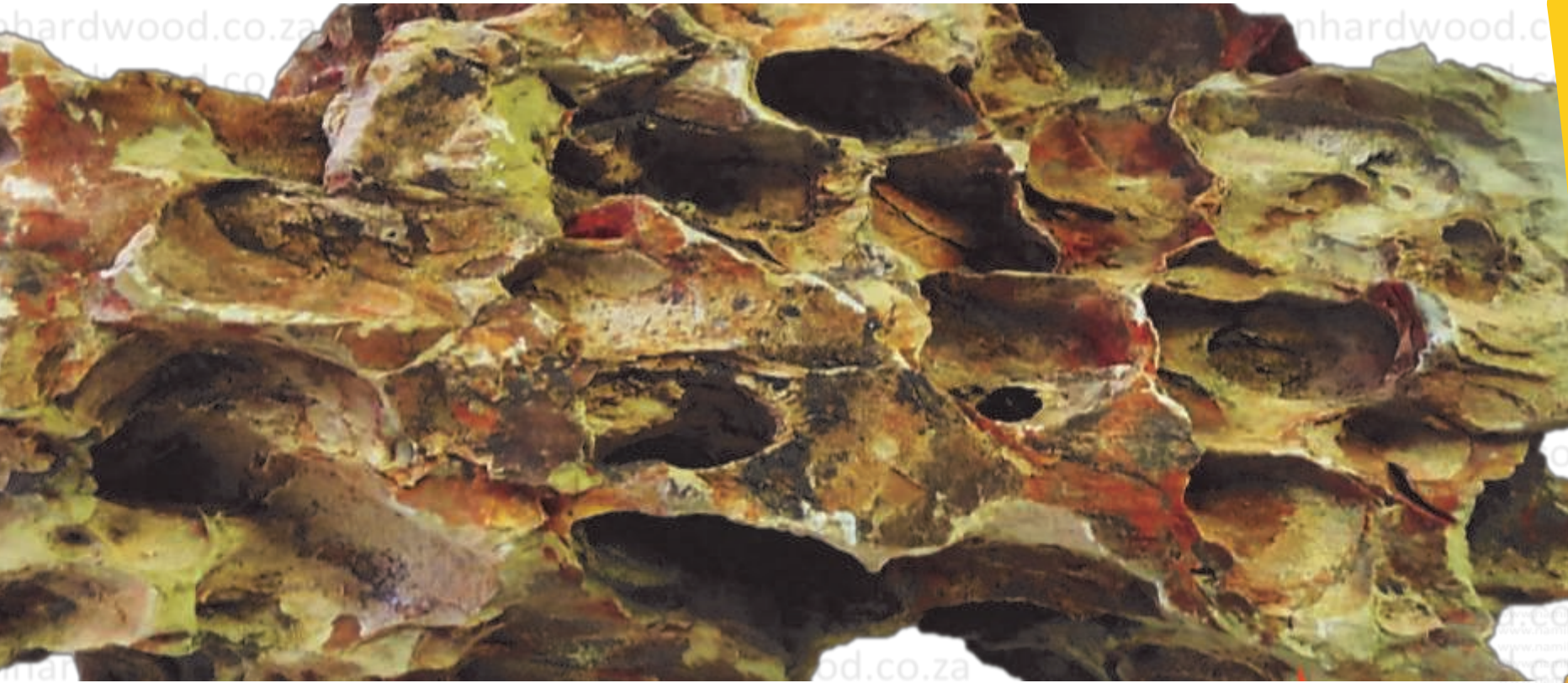
RIVER PEBBLES - PET INDUSTRY



ALL RIGHTS RESERVED
COPYRIGHT ©



DESERT ROCKS

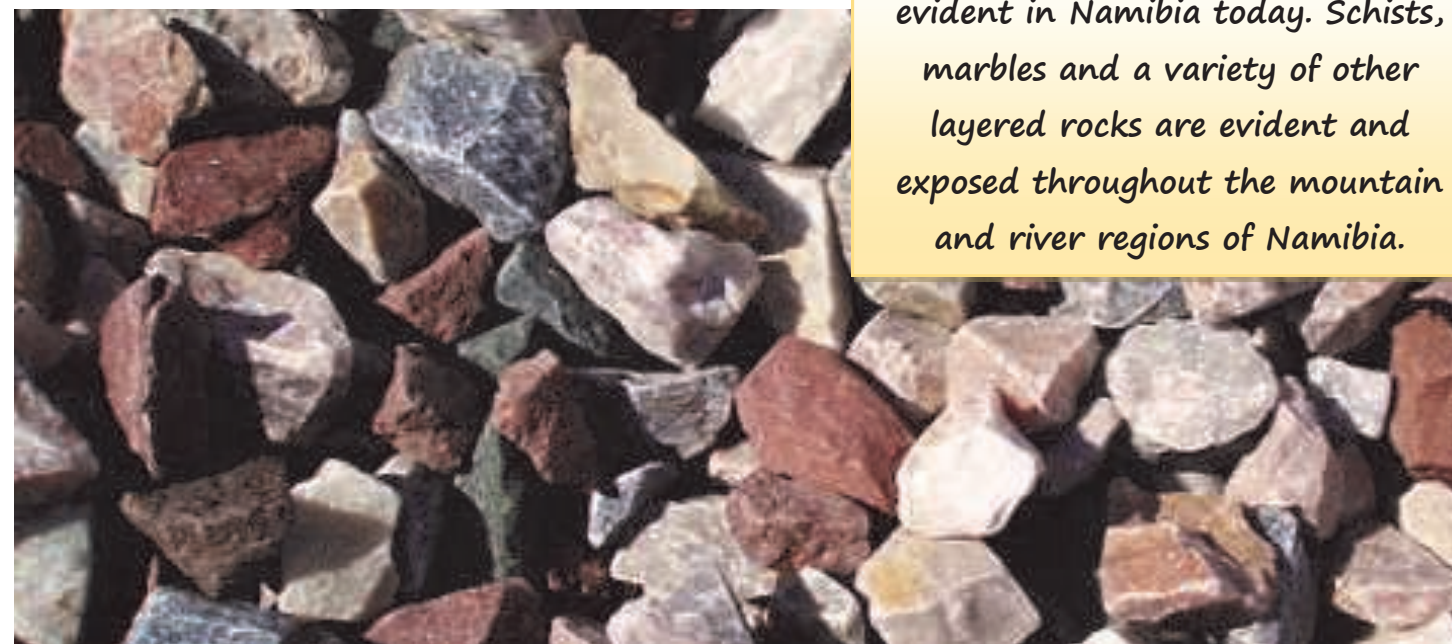


Rocks have captivated many enthusiasts and geologists for thousands of years. As no 2 pieces are the same, even when of the same species, they can make impressive indoor or outdoor displays.

A spectacular example of new rocks being produced, is when volcanoes erupt. All rocks mined and sold by Namibian Hardwood Pty Ltd. are done so under the mining regulations and laws of the Namibian Government, and all legal paperwork is in place to transport and export our rocks.



Geological events of the past are evident in Namibia today. Schists, marbles and a variety of other layered rocks are evident and exposed throughout the mountain and river regions of Namibia.

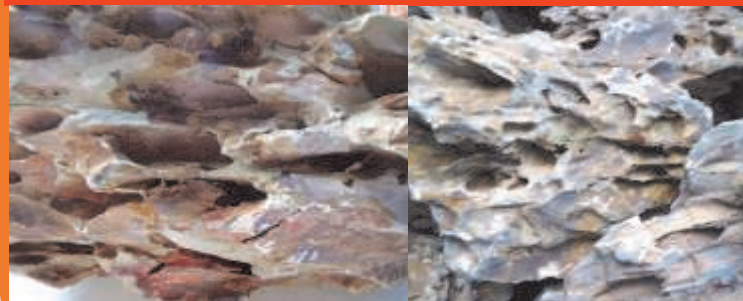


COLORADO ROCK

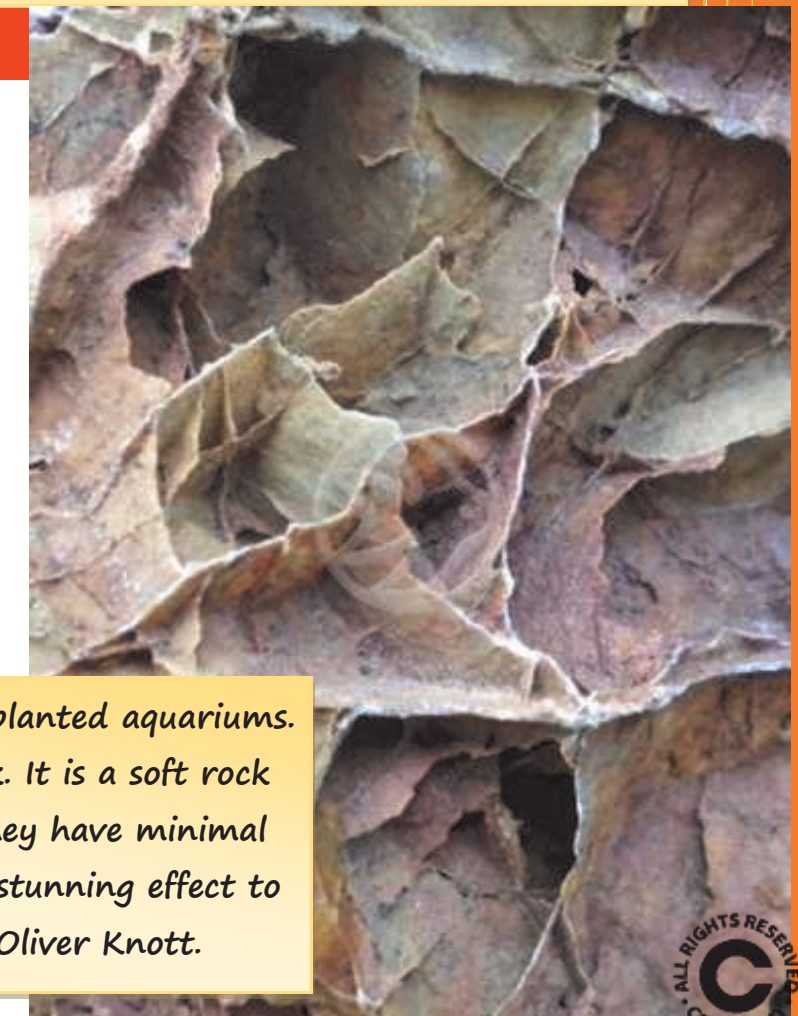


Colorado Rock is a decorative, clean and versatile way to add a touch of nature and beauty to any garden. It never needs replacing and is virtually maintenance-free. It is very popular in the pet industry and used in Vivariums for reptiles of all kinds, as well as spiders. It does not fade, and serves as a natural insulation in heat or cold.

These beautifully decorative stones are used in pathways, ponds, birdbaths, ground cover, garden accents and drainage systems.



DRAGON ROCK



Dragon Rock is a desirable aquarium rock most often used when aquascaping planted aquariums. Its predominant scaly surface gives it its characteristic name of Dragon Rock. It is a soft rock with incredible grooves and crevices, created naturally by Mother Nature. They have minimal effect on the pH in the water, are easy to place, and give an immediate and stunning effect to any aquarium. They are the rock of choice by world famous Aquascaper Oliver Knott.

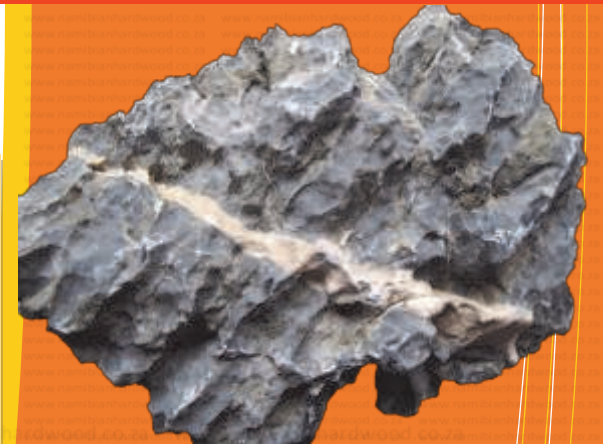
FOSSILISED WOOD STONE

"Fossilised wood" is a general term for wood that has been petrified or preserved by other methods of natural fossilisation. This rock is cut into shapes for making jewellery, bookends, table tops, clock faces, and many other crafts. It is also very popular for making beautiful aquarium landscapes and many reptile owners use it in their Vivariums and Terrariums.



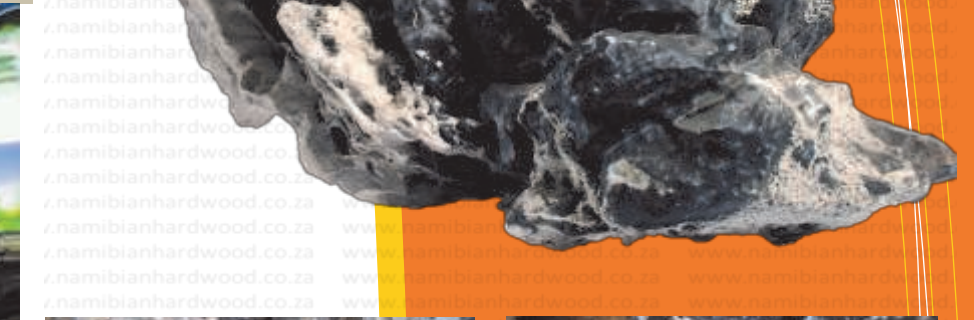
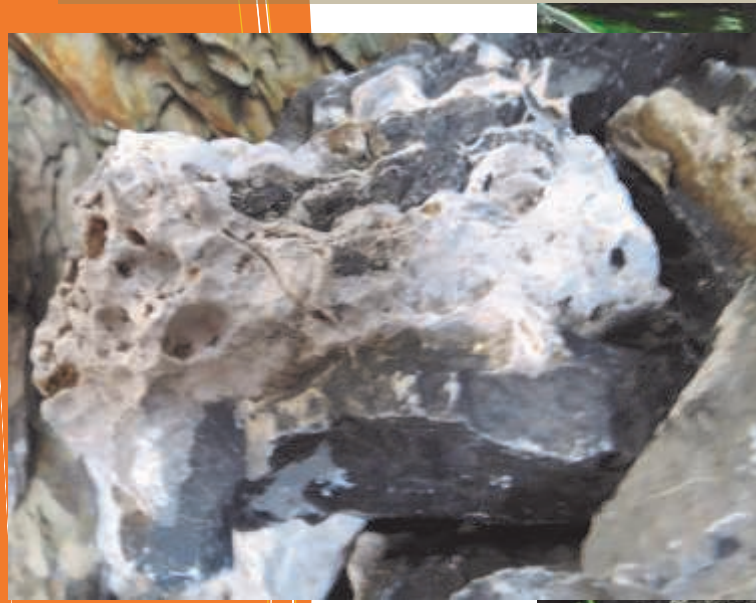
GREY MOUNTAIN ROCK

Grey Mountain Rock is an attractive rock that will enable you to achieve a truly beautiful, natural aquarium. The close-up rugged structure and the various dimensions of these rocks are ideally suited for in natural aquariums of all sizes. Whether it's a classical, Iwagumi Nature Aquarium or African Malawi Aquariums, these rocks are always a brilliant choice. The average weight of the rocks is around 0.2-6kg. They vary in colour from grey-brown to almost black-white contrasts and have characteristic white veins running through them. They are also popular amongst reptile hobbyists.



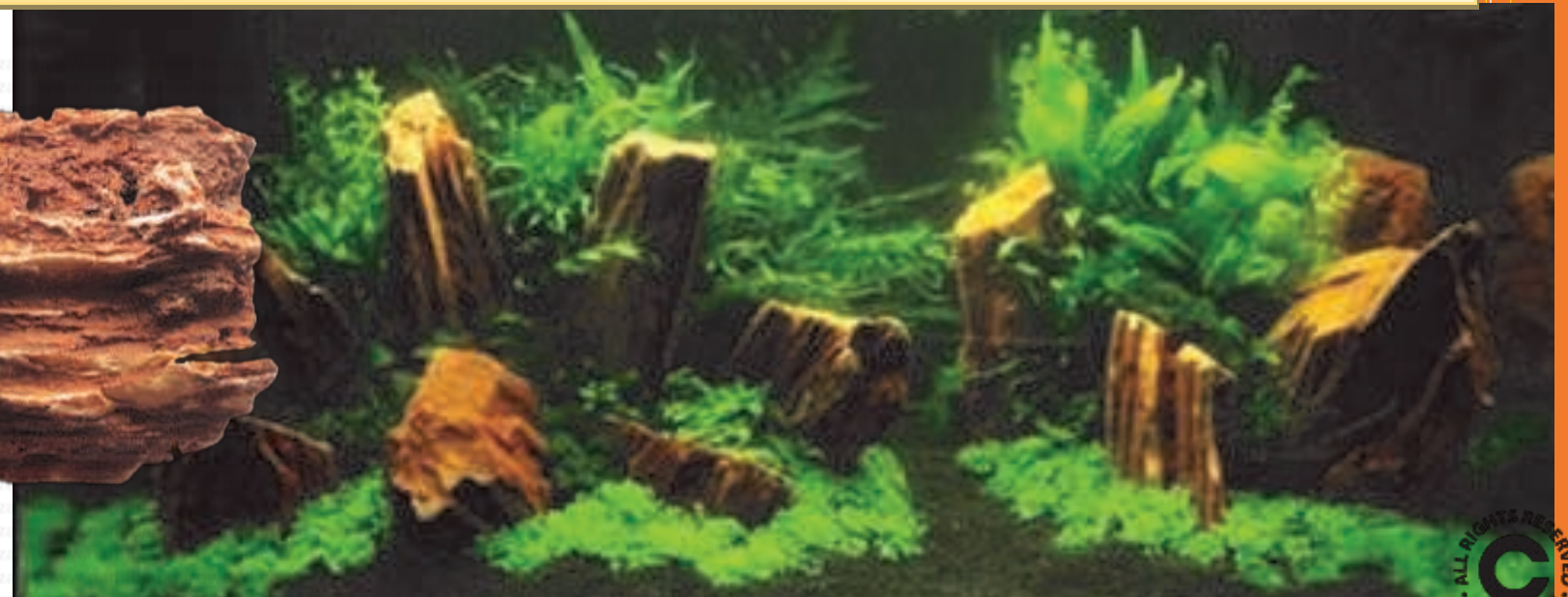
LEOPARD STONE

The name Leopard Rock can be applied to any rock that roughly resembles the coat of a leopard, i.e. spotted rocks with dark spots surrounded by a lighter coloured matrix. It is popular in the pet trade due to its unusual and striking markings and colouring. It has also gained popularity with landscapers and garden designers as an attractive feature as well as complimenting flowerbeds, pathways and water features.



STONEWOOD ROCK

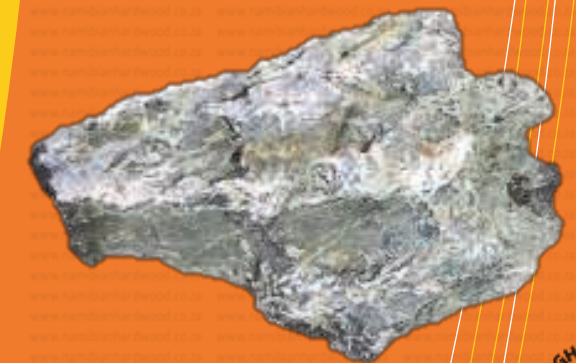
The name describes this rock perfectly. A natural rock, that looks like ancient stone. It is great for aquariums, and creates a wonderful looking aquascaper tank. Aquatic plants grow easily on and around this stone. It is also used by landscapers as an alternative to wood which may tend to rot and disintegrate in the garden, whereas Stonewood Rock gives the appearance of wood but is in fact durable and long-lasting.



MINI LANDSCAPE ROCK



These rocks were almost created for aquariums. Their grooves, shapes and contours, give the aquascaper and aquarium enthusiast so many choices. It can often be difficult to make up your mind about which way looks best. Colours vary from light to dark grey. It has a minimal effect on pH, and is not noticeable in planted aquariums. They are small and easy to place, and give an immediate impact to any aquarium. They are the favourite rock choice of world famous Aquascaper, Takashi Amano due to their texture and size.



ZEBRA STONE



Zebra Stone is a marketing name for a decorative stone showing brown banding, and similar patterns. Zebra Stone has been used largely as an ornamental stone for carvings, some costume jewellery, inlays, paper weights and figurines. Several unique items of hollow ware, such as decorative vases and lidded pots, have been produced from Zebra Stone.

This Rock is vary scare to obtain.

MOONSTONE ROCK



Moonstone Rock is an ideal substitute for South Seas Rock which is sought after by many people who have marine aquariums. It is lighter and cheaper than South Seas Rock. This rock is suitable for any tank containing Cichlids or Marine fish. Moonstone is a rock with an enormous diversity of uses. Most Moonstone is made into crushed stone and used as a construction material. It is used as a crushed stone for road base and railroad ballast. It is used as an aggregate in concrete and is fired in a kiln with crushed shale to make cement.





RED DUNE SAND

Our Red Desert Sand is a highly regulated product that we offer to the Reptile Industry. The sand is legally mined and specially packed in 20kg bags for the Reptile Industry.

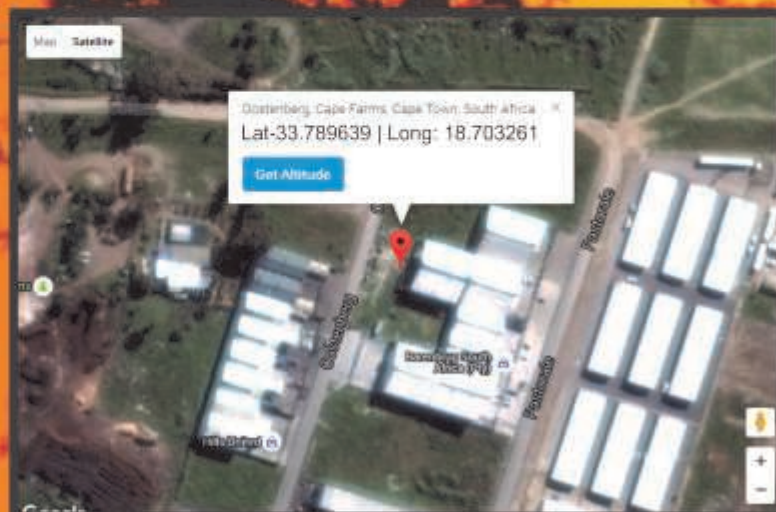
The sand is treated and does not contain any lice, or other forms of insects or contamination. It is a highly recommended product for any reptile.



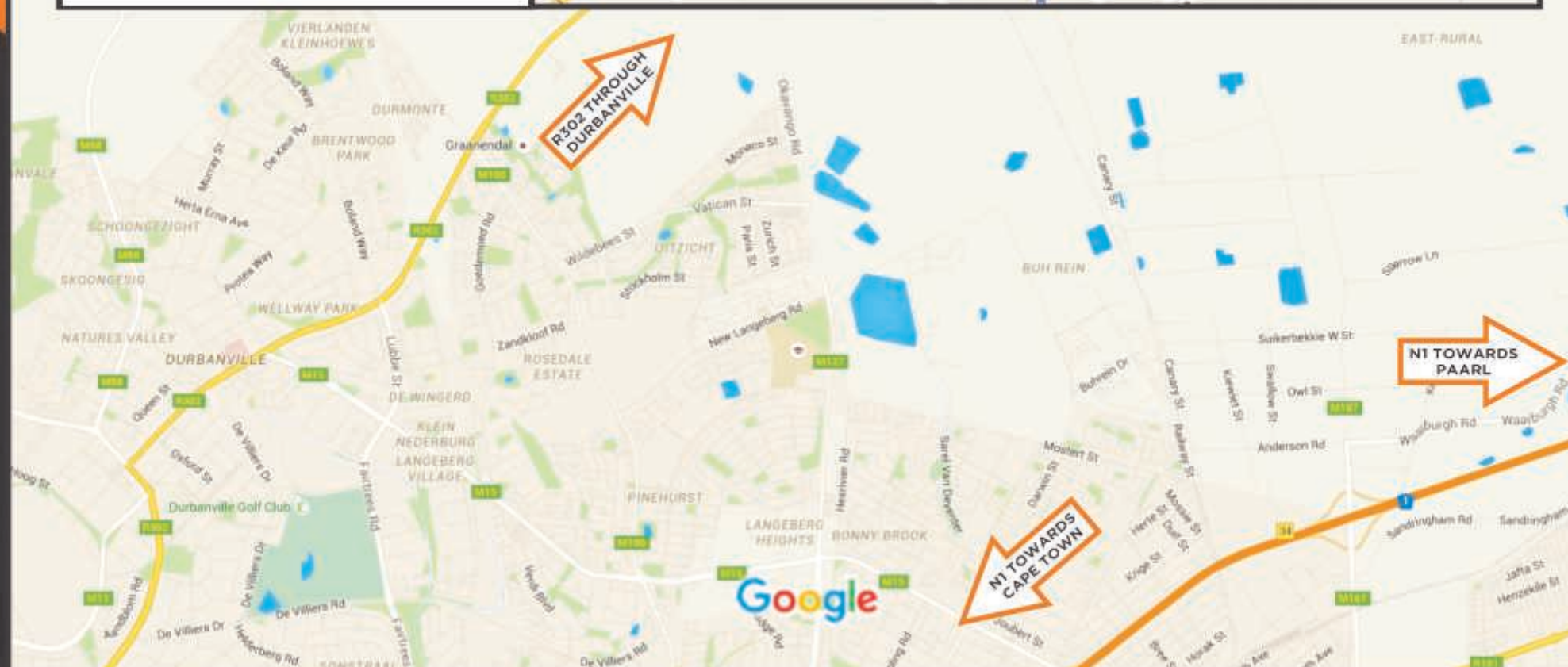
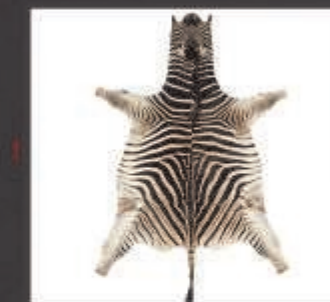
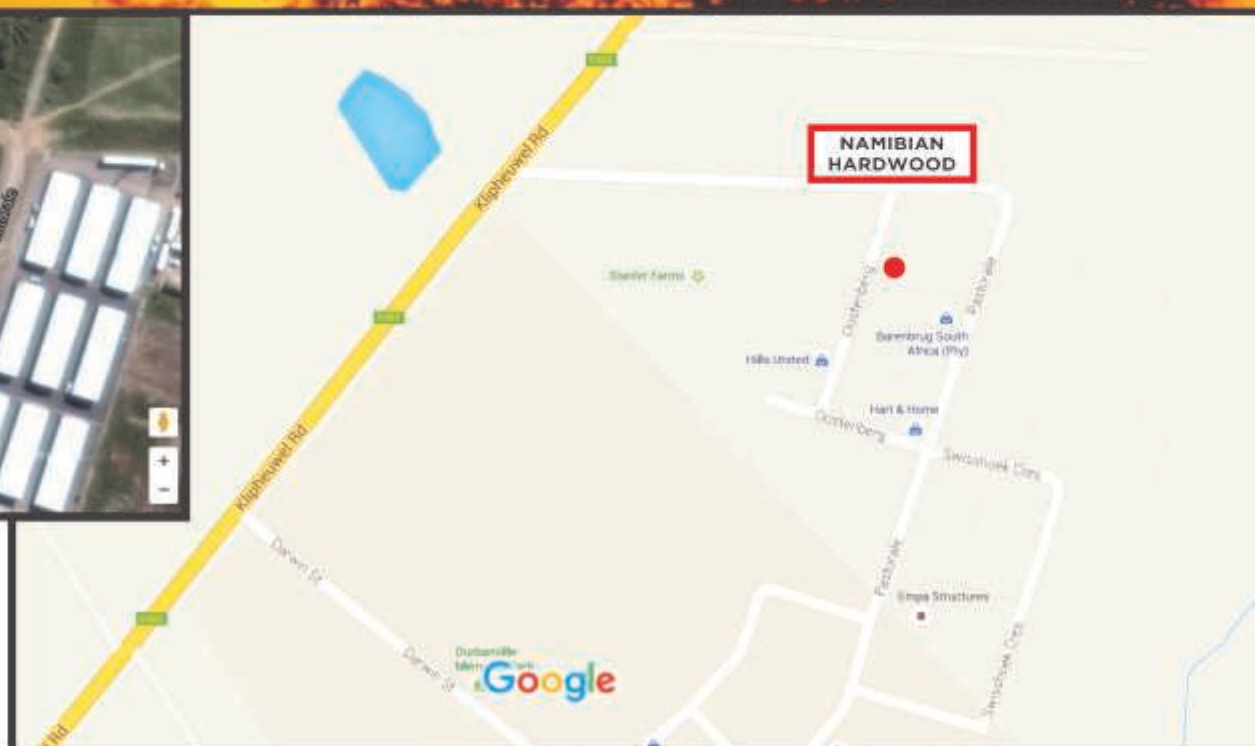


NAMIBIAN HARDWOOD

PTY LTD



12
OOSTENBERG STR
DURBANVILLE INDUSTRIA
(OPPOSITE DURBANVILLE
MEMORIAL AND TYDSTROOM
CHICKEN FACTORY)







12 Oostenberg street, Durbanville Industrial Park, Cape Town, 7550, RSA

E-mail: info@namibianhardwood.co.za

Office: +27 21 979 2051

Fax: +27 (0)86 6946157 VAT Reg. Nr: 4350267862

www.namibianhardwood.co.za

Copyright © 2016 by Namibian Hardwood Pty Ltd.

All rights reserved. No part of this publication may be reproduced, distributed, or transmitted in any form or by any means, including photocopying, recording, or other electronic or mechanical methods, without the prior written permission of the Owner, except in the case of brief quotations embodied in critical reviews and certain other non-commercial uses permitted by copyright law. For permission requests, write to the Owner, addressed "Attention: Permissions Coordinator," at the address below.

Namibian Hardwood Pty Ltd. (Attention: Mr Phillip Kleinhans)
12 Oostenberg Street, Durbanville Industrial Park
Durbanville, Cape Town, South Africa, 7550
www.namibianhardwood.co.za